



NFκB-p65 (phospho Thr254) rabbit pAb

Cat No.:ES1373

For research use only

Overview

Product Name	NFκB-p65 (phospho Thr254) rabbit pAb
Host species	Rabbit
Applications	WB;IHC;IF;IP;ELISA
Species Cross-Reactivity	Human;Mouse;Rat
Recommended dilutions	Western Blot: 1/500 - 1/2000. Immunohistochemistry: 1/100 - 1/300. Immunoprecipitation: 2-5 ug/mg lysate. ELISA: 1/20000. Not yet tested in other applications.
Immunogen	The antiserum was produced against synthesized peptide derived from human NF-kappaB p65 around the phosphorylation site of Thr254. AA range:221-270
Specificity	Phospho-NFκB-p65 (T254) Polyclonal Antibody detects endogenous levels of NFκB-p65 protein only when phosphorylated at T254.
Formulation	Liquid in PBS containing 50% glycerol, 0.5% BSA and 0.02% sodium azide.
Storage	Store at -20°C. Avoid repeated freeze-thaw cycles.
Protein Name	Transcription factor p65
Gene Name	RELA
Cellular localization	Nucleus . Cytoplasm . Nuclear, but also found in the cytoplasm in an inactive form complexed to an inhibitor (I-kappa-B) (PubMed:1493333). Colocalized with DDX1 in the nucleus upon TNF-alpha induction (PubMed:19058135). Colocalizes with GFI1 in the nucleus
Purification	The antibody was affinity-purified from rabbit antiserum by affinity-chromatography using epitope-specific immunogen.
Clonality	Polyclonal
Concentration	1 mg/ml
Observed band	
Human Gene ID	5970





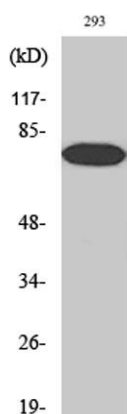
Human Swiss-Prot Number
Alternative Names

Q04206

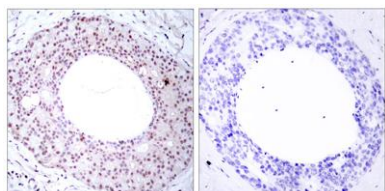
RELA; NFKB3; Transcription factor p65; Nuclear factor NF-kappa-B p65 subunit; Nuclear factor of kappa light polypeptide gene enhancer in B-cells 3

Background

NF-kappa-B is a ubiquitous transcription factor involved in several biological processes. It is held in the cytoplasm in an inactive state by specific inhibitors. Upon degradation of the inhibitor, NF-kappa-B moves to the nucleus and activates transcription of specific genes. NF-kappa-B is composed of NFKB1 or NFKB2 bound to either REL, RELA, or RELB. The most abundant form of NF-kappa-B is NFKB1 complexed with the product of this gene, RELA. Four transcript variants encoding different isoforms have been found for this gene. [provided by RefSeq, Sep 2011],

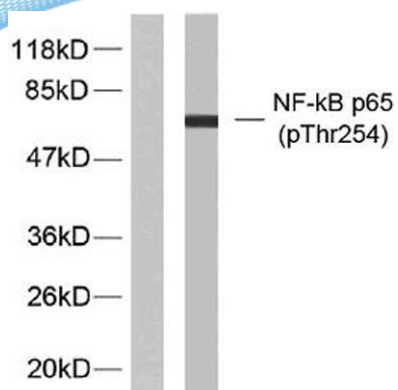


Western Blot analysis of various cells using
Phospho-NFκB-p65 (T254) Polyclonal Antibody



Immunohistochemistry analysis of paraffin-embedded human breast carcinoma, using NF-kappaB p65 (Phospho-Thr254) Antibody. The picture on the right is blocked with the phospho peptide.





Western blot analysis of lysates from 293 cells treated with TNF-alpha, using NF-kappaB p65 (Phospho-Thr254) Antibody. The lane on the left is blocked with the phospho peptide.

