



Dok-1 (phospho Tyr362) rabbit pAb

Cat No.:ES1298

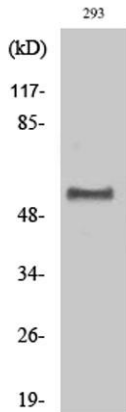
For research use only

Overview

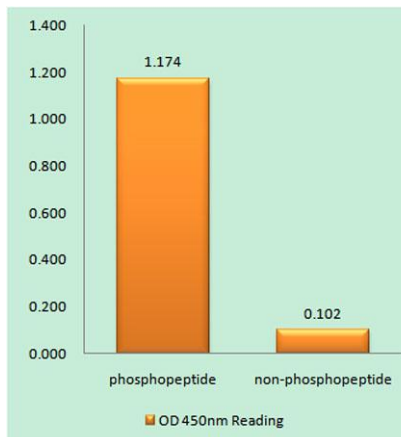
Product Name	Dok-1 (phospho Tyr362) rabbit pAb
Host species	Rabbit
Applications	WB;IF;ELISA
Species Cross-Reactivity	Human;Mouse;Rat
Recommended dilutions	Western Blot: 1/500 - 1/2000. Immunofluorescence: 1/200 - 1/1000. ELISA: 1/10000. Not yet tested in other applications.
Immunogen	The antiserum was produced against synthesized peptide derived from human p62 Dok around the phosphorylation site of Tyr362. AA range:329-378
Specificity	Phospho-Dok-1 (Y362) Polyclonal Antibody detects endogenous levels of Dok-1 protein only when phosphorylated at Y362.
Formulation	Liquid in PBS containing 50% glycerol, 0.5% BSA and 0.02% sodium azide.
Storage	Store at -20°C. Avoid repeated freeze-thaw cycles.
Protein Name	Docking protein 1
Gene Name	DOK1
Cellular localization	[Isoform 1]: Cytoplasm. Nucleus.; [Isoform 3]: Cytoplasm, perinuclear region.
Purification	The antibody was affinity-purified from rabbit antiserum by affinity-chromatography using epitope-specific immunogen.
Clonality	Polyclonal
Concentration	1 mg/ml
Observed band	55kD
Human Gene ID	1796
Human Swiss-Prot Number	Q99704
Alternative Names	DOK1; Docking protein 1; Downstream of tyrosine kinase 1; p62(dok); pp62
Background	docking protein 1(DOK1) Homo sapiens The protein encoded by this gene is part of a signal transduction pathway downstream of receptor



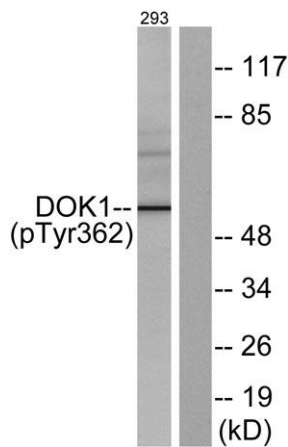
tyrosine kinases. The encoded protein is a scaffold protein that helps form a platform for the assembly of multiprotein signaling complexes. Several transcript variants encoding different isoforms have been found for this gene. [provided by RefSeq, Jan 2016],



Western Blot analysis of various cells using Phospho-Dok-1 (Y362) Polyclonal Antibody



Enzyme-Linked Immunosorbent Assay (Phospho-ELISA) for Immunogen Phosphopeptide (Phospho-left) and Non-Phosphopeptide (Phospho-right), using p62 Dok (Phospho-Tyr362) Antibody



Western blot analysis of lysates from 293 cells, using p62 Dok (Phospho-Tyr362) Antibody. The lane on the right is blocked with the phospho peptide.

