



# ELK Biotechnology

Cyclin B1 Rabbit pAb

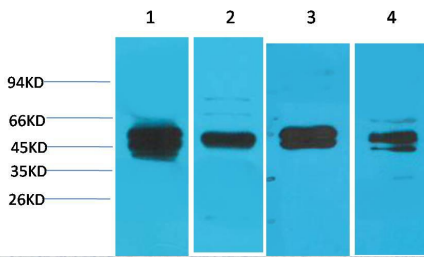
Catalog NO.: EA244

For research use only.

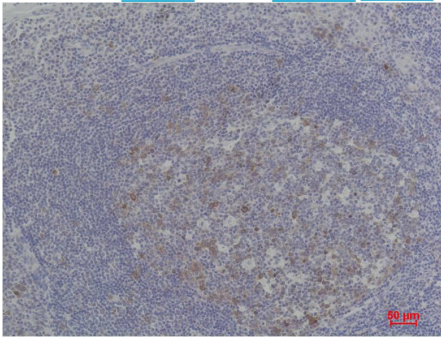
## Overview

---

Product name	Cyclin B1 Rabbit polyclonal antibody
Source	Rabbit
Applications	<b>WB, IHC</b>
Species reactivity	<b>Human, Rat, Mouse</b>
Recommended dilutions	<b>WesternBlot:1/1000-2000</b> <b>Immunohistochemistry:1/200-500</b> <b>NOTE: Optimal dilutions should be determined by the end user.</b>
Immunogen	Recombinant Protein
Species	Human
Storage	PBS with 0.02% sodium azide and 50% glycerol pH 7.4. Store at -20° C. Avoid repeated freeze-thaw cycles.
Isotype	IgG
Clonality	Polyclonal
Concentration	1 mg/ml
Observed band	<b>55kDa</b>
GenelD (Human)	891
Human Swiss-Prot No.	P14635
Cellular localization	Cytoplasm, Cytoskeleton, Nucleus
Alternative Names	CCNB1 antibody, G2 mitotic specific cyclin B1 antibody
Background	Cyclin B1 is a regulatory protein involved in mitosis. The gene product complexes with p34 (Cdk1) to form the maturation-promoting factor (MPF). Two alternative transcripts have been found, a constitutively expressed transcript and a cell cycle-regulated transcript that is expressed predominantly during G2/M phase of the cell cycle.



Western blot analysis of 1) Jurkat, 2) HeLa, 3) C2C12, 4) Rat Liver Tissue with Cyclin B1 Rabbit pAb EA244 diluted at 1:2,000.



Immunohistochemical analysis of paraffin-embedded Human Tonsil Carcinoma using Cyclin B1 (EA244) Rabbit pAb diluted at 1:500.