

HAUS6 rabbit pAb

Cat No.:ES15820

For research use only

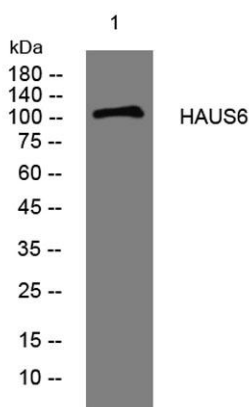
Overview

Product Name	HAUS6 rabbit pAb
Host species	Rabbit
Applications	WB
Species Cross-Reactivity	Human;Rat;Mouse;
Recommended dilutions	WB 1:500-2000
Immunogen	Synthesized peptide derived from human HAUS6 AA range: 476-526
Specificity	This antibody detects endogenous levels of HAUS6 at Human
Formulation	Liquid in PBS containing 50% glycerol, 0.5% BSA and 0.02% sodium azide.
Storage	Store at -20°C. Avoid repeated freeze-thaw cycles.
Protein Name	HAUS6
Gene Name	HAUS6 DGT6 FAM29A KIAA1574
Cellular localization	Cytoplasm, cytoskeleton . Cytoplasm, cytoskeleton, spindle . Cytoplasm, cytoskeleton, microtubule organizing center, centrosome . Localizes to interphase centrosomes and to mitotic spindle microtubules. .
Purification	The antibody was affinity-purified from rabbit antiserum by affinity-chromatography using epitope-specific immunogen.
Clonality	Polyclonal
Concentration	1 mg/ml
Observed band	105kD
Human Gene ID	54801
Human Swiss-Prot Number	Q7Z4H7
Alternative Names	HAUS augmin-like complex subunit 6
Background	The protein encoded by this gene is a subunit of the augmin complex. The augmin complex plays a role in microtubule attachment to the kinetochore and central spindle formation. This protein may have a role in efficient chromosome congression and





segregation by promoting microtubule-dependent microtubule amplification. Pseudogenes of this gene are located on chromosomes 7 and 20. Alternative splicing results in multiple transcript variants that encode different protein isoforms. [provided by RefSeq, Aug 2012],



Western blot analysis of lysates from HeLa cells, primary antibody was diluted at 1:1000, 4° over night

