

# KRA46 rabbit pAb

Cat No.:ES15252

For research use only

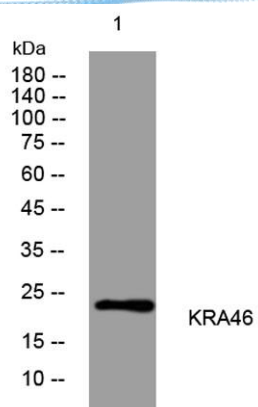
## Overview

|                          |   |
|--------------------------|---|
| Product Name             | KRA46 rabbit pAb  |
| Host species             | Rabbit  |
| Applications             | WB  |
| Species Cross-Reactivity | Human;Rat;Mouse;  |
| Recommended dilutions    | WB 1: 500-2000  |
| Immunogen                | Synthesized peptide derived from human KRA46 AA range: 43-93  |
| Specificity              | This antibody detects endogenous levels of KRA46 at Human   |
| Formulation              | Liquid in PBS containing 50% glycerol, 0.5% BSA and 0.02% sodium azide.   |
| Storage                  | Store at -20°C. Avoid repeated freeze-thaw cycles.  |
| Protein Name             | KRA46   |
| Gene Name                | KRTAP4-6 KAP4.15 KRTAP4-15 KRTAP4.15 KRTAP4.6   |
| Cellular localization    | keratin filament,   |
| Purification             | The antibody was affinity-purified from rabbit antiserum by affinity-chromatography using epitope-specific immunogen. |
| Clonality                | Polyclonal  |
| Concentration            | 1 mg/ml   |
| Observed band            |   |
| Human Gene ID            | 81871   |
| Human Swiss-Prot Number  | Q9BYQ5  |
| Alternative Names        |   |
| Background               |   |





**ELK Biotechnology**



Western blot analysis of lysates from VEC cells, primary antibody was diluted at 1:1000, 4° over night



+86-27-59760950

ELKbio@ELKbiotech.com

[www.elkbiotech.com](http://www.elkbiotech.com)

23-2, No.388 Gaoxin 2nd Road, Wuhan East Lake Hi-tech Development Zone, Hubei, P.R.C.