

MRI rabbit pAb

Cat No.:ES14710

For research use only

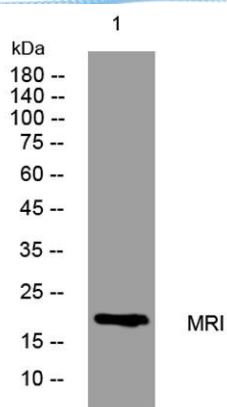
Overview

Product Name	MRI rabbit pAb
Host species	Rabbit
Applications	WB;ELISA;IHC
Species Cross-Reactivity	Human; Mouse;Rat
Recommended dilutions	WB 1:500-2000;IHC-p 1:50-300; ELISA 2000-20000
Immunogen	Synthesized peptide derived from human MRI AA range: 40-90
Specificity	This antibody detects endogenous levels of MRI at Human/Mouse/Rat
Formulation	Liquid in PBS containing 50% glycerol, 0.5% BSA and 0.02% sodium azide.
Storage	Store at -20°C. Avoid repeated freeze-thaw cycles.
Protein Name	MRI
Gene Name	MRI C7orf49
Cellular localization	[Isoform 1]: Cytoplasm . Nucleus . Chromosome . Nuclear localization may depend upon interaction with XRCC5/Ku80 and XRCC6/Ku70 heterodimer (PubMed:24610814). Localizes to DNA damage sites (PubMed:27063109). .; [Isoform 3]: Cytoplasm . Some nuclear locali
Purification	The antibody was affinity-purified from rabbit antiserum by affinity-chromatography using epitope-specific immunogen.
Clonality	Polyclonal
Concentration	1 mg/ml
Observed band	
Human Gene ID	78996
Human Swiss-Prot Number	Q9BWK5
Alternative Names	
Background	





ELK Biotechnology



Western blot analysis of lysates from 293T cells, primary antibody was diluted at 1:1000, 4° over night



Immunohistochemical analysis of paraffin-embedded human oophoroma. 1, Antibody was diluted at 1:200(4° overnight). 2, Tris-EDTA, pH9.0 was used for antigen retrieval. 3, Secondary antibody was diluted at 1:200(room temperature, 45min).



+86-27-59760950

ELKbio@ELKbiotech.com

www.elkbiotech.com

23-2, No.388 Gaoxin 2nd Road, Wuhan East Lake Hi-tech Development Zone, Hubei, P.R.C.