

PP6R2 rabbit pAb

Cat No.:ES14003

For research use only

Overview

Product Name	PP6R2 rabbit pAb
Host species	Rabbit
Applications	WB
Species Cross-Reactivity	Human; Mouse
Recommended dilutions	WB 1:500-2000
Immunogen	Synthesized peptide derived from human PP6R2 AA range: 59-109
Specificity	This antibody detects endogenous levels of PP6R2 at Human/Mouse
Formulation	Liquid in PBS containing 50% glycerol, 0.5% BSA and 0.02% sodium azide.
Storage	Store at -20°C. Avoid repeated freeze-thaw cycles.
Protein Name	PP6R2
Gene Name	PPP6R2 KIAA0685 PP6R2 SAPS2
Cellular localization	Cytoplasm .
Purification	The antibody was affinity-purified from rabbit antiserum by affinity-chromatography using epitope-specific immunogen.
Clonality	Polyclonal
Concentration	1 mg/ml
Observed band	105kD
Human Gene ID	9701
Human Swiss-Prot Number	O75170
Alternative Names	Serine/threonine-protein phosphatase 6 regulatory subunit 2 (SAPS domain family member 2)
Background	Protein phosphatase regulatory subunits, such as SAPS2, modulate the activity of protein phosphatase catalytic subunits by restricting substrate specificity, recruiting substrates, and determining the intracellular localization of the holoenzyme. SAPS2 is a regulatory subunit for the protein phosphatase-6 catalytic subunit (PPP6C; MIM 612725) (Stefansson and Brautigan, 2006 [PubMed 16769727]).[supplied

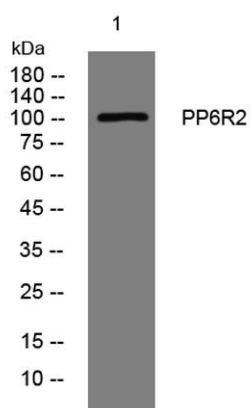




ELK Biotechnology

by OMIM, Nov 2010],

Western blot analysis of lysates from K562 cells, primary antibody was diluted at 1:1000, 4° over night



+86-27-59760950

ELKbio@ELKbiotech.com

www.elkbiotech.com

23-2, No.388 Gaoxin 2nd Road, Wuhan East Lake Hi-tech Development Zone, Hubei, P.R.C.