

SRGP1 rabbit pAb

Cat No.:ES12955

For research use only

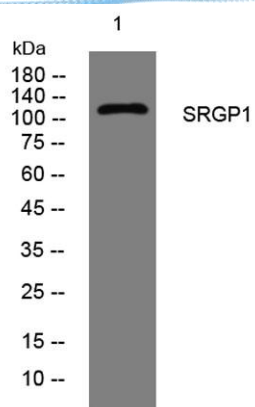
Overview

Product Name	SRGP1 rabbit pAb
Host species	Rabbit
Applications	WB
Species Cross-Reactivity	Human; Mouse
Recommended dilutions	WB 1: 500-2000
Immunogen	Synthesized peptide derived from human SRGP1 AA range: 159-209
Specificity	This antibody detects endogenous levels of SRGP1 at Human/Mouse
Formulation	Liquid in PBS containing 50% glycerol, 0.5% BSA and 0.02% sodium azide.
Storage	Store at -20°C. Avoid repeated freeze-thaw cycles.
Protein Name	SRGP1
Gene Name	SRGAP1 ARHGAP13 KIAA1304
Cellular localization	cytoplasm,cytosol,
Purification	The antibody was affinity-purified from rabbit antiserum by affinity-chromatography using epitope-specific immunogen.
Clonality	Polyclonal
Concentration	1 mg/ml
Observed band	
Human Gene ID	57522
Human Swiss-Prot Number	Q7Z6B7
Alternative Names	
Background	The protein encoded by this gene is a GTPase activator, working with the GTPase CDC42 to negatively regulate neuronal migration. The encoded protein interacts with the transmembrane receptor ROBO1 to inactivate CDC42. [provided by RefSeq, Sep 2016],





ELK Biotechnology



Western blot analysis of lysates from U2OS cells, primary antibody was diluted at 1:1000, 4° over night



+86-27-59760950

ELKbio@ELKbiotech.com

www.elkbiotech.com

23-2, No.388 Gaoxin 2nd Road, Wuhan East Lake Hi-tech Development Zone, Hubei, P.R.C.