

SPRE2 rabbit pAb

Cat No.:ES12983

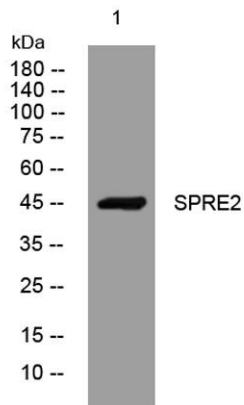
For research use only

Overview

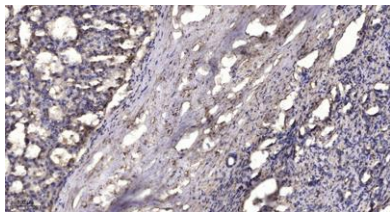
Product Name	SPRE2 rabbit pAb
Host species	Rabbit
Applications	WB;IHC
Species Cross-Reactivity	Human; Mouse;Rat
Recommended dilutions	WB 1:500-2000;IHC-p 1:50-300
Immunogen	Synthesized peptide derived from human SPRE2 AA range: 68-118
Specificity	This antibody detects endogenous levels of SPRE2 at Human/Mouse/Rat
Formulation	Liquid in PBS containing 50% glycerol, 0.5% BSA and 0.02% sodium azide.
Storage	Store at -20°C. Avoid repeated freeze-thaw cycles.
Protein Name	SPRE2
Gene Name	SPRED2
Cellular localization	Cell membrane ; Peripheral membrane protein ; Cytoplasmic side . Cytoplasmic vesicle, secretory vesicle membrane ; Peripheral membrane protein ; Cytoplasmic side . Cytoplasm . Detected in the cytoplasm of the stratum spinosum cells, where it is associated
Purification	The antibody was affinity-purified from rabbit antiserum by affinity-chromatography using epitope-specific immunogen.
Clonality	Polyclonal
Concentration	1 mg/ml
Observed band	
Human Gene ID	200734
Human Swiss-Prot Number	Q7Z698
Alternative Names	
Background	SPRED2 is a member of the Sprouty (see SPRY1; MIM 602465)/SPRED family of proteins that regulate growth factor-induced activation of the MAP kinase cascade (see MAPK1; MIM 176948) (Nonami et al.,



2004 [PubMed 15465815]).[supplied by OMIM, Mar 2008],



Western blot analysis of lysates from KB cells, primary antibody was diluted at 1:1000, 4° over night



Immunohistochemical analysis of paraffin-embedded human liver cancer. 1, Antibody was diluted at 1:200(4° overnight). 2, Tris-EDTA, pH 9.0 was used for antigen retrieval. 3, Secondary antibody was diluted at 1:200(room temperature, 45min).

