

# IQEC1 rabbit pAb

Cat No.:ES15433

For research use only

## Overview

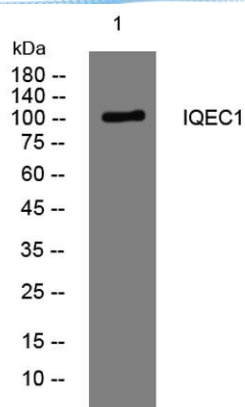
Product Name	IQEC1 rabbit pAb
Host species	Rabbit
Applications	WB
Species Cross-Reactivity	Human; Mouse
Recommended dilutions	WB 1:500-2000
Immunogen	Synthesized peptide derived from human IQEC1 AA range: 693-743
Specificity	This antibody detects endogenous levels of IQEC1 at Human/Mouse
Formulation	Liquid in PBS containing 50% glycerol, 0.5% BSA and 0.02% sodium azide.
Storage	Store at -20°C. Avoid repeated freeze-thaw cycles.
Protein Name	IQEC1
Gene Name	IQSEC1 ARFGEP100 BRAG2 KIAA0763
Cellular localization	Cytoplasm . Nucleus . Cell junction, synapse, postsynaptic density . Cytoplasmic vesicle, secretory vesicle, synaptic vesicle . At steady state, may be preferentially cytosolic.
Purification	The antibody was affinity-purified from rabbit antiserum by affinity-chromatography using epitope-specific immunogen.
Clonality	Polyclonal
Concentration	1 mg/ml
Observed band	105kD
Human Gene ID	9922
Human Swiss-Prot Number	Q6DN90
Alternative Names	IQ motif and SEC7 domain-containing protein 1 (ADP-ribosylation factors guanine nucleotide-exchange protein 100) (ADP-ribosylation factors guanine nucleotide-exchange protein 2) (Brefeldin-resistant Arf-GEF 2 protein)

## Background





**ELK Biotechnology**



Western blot analysis of lysates from HCT116 cells,  
primary antibody was diluted at 1:1000, 4° over night



+86-27-59760950

ELKbio@ELKbiotech.com

[www.elkbiotech.com](http://www.elkbiotech.com)

23-2, No.388 Gaoxin 2nd Road, Wuhan East Lake Hi-tech Development Zone, Hubei, P.R.C.