

Kallikrein-4 (Cleaved-Ile31) rabbit pAb

Cat No.:ES20018

For research use only

Overview

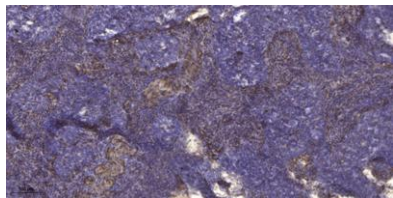
Product Name	Kallikrein-4 (Cleaved-Ile31) rabbit pAb
Host species	Rabbit
Applications	WB;IHC
Species Cross-Reactivity	Human;Rat;Mouse;
Recommended dilutions	WB 1:500-2000;IHC-p 1:50-300
Immunogen	Synthesized peptide derived from human Kallikrein-4 (Cleaved-Ile31)
Specificity	This antibody detects endogenous levels of Human Kallikrein-4 (Cleaved-Ile31, protein was cleaved amino acid sequence between 30-31)
Formulation	Liquid in PBS containing 50% glycerol, 0.5% BSA and 0.02% sodium azide.
Storage	Store at -20°C. Avoid repeated freeze-thaw cycles.
Protein Name	Kallikrein-4 (Cleaved-Ile31)
Gene Name	KLK4 EMSP1 PRSS17 PSTS
Cellular localization	Secreted.
Purification	The antibody was affinity-purified from rabbit antiserum by affinity-chromatography using epitope-specific immunogen.
Clonality	Polyclonal
Concentration	1 mg/ml
Observed band	25kD
Human Gene ID	9622
Human Swiss-Prot Number	Q9Y5K2
Alternative Names	Kallikrein-4 (EC 3.4.21.-;Enamel matrix serine proteinase 1;Kallikrein-like protein 1;KLK-L1;Prostase;Serine protease 17)

Background





ELK Biotechnology



Immunohistochemical analysis of paraffin-embedded human cervical carcinoma. 1, Antibody was diluted at 1:200(4° overnight). 2, Tris-EDTA,pH9.0 was used for antigen retrieval. 3,Secondary antibody was diluted at 1:200(room temperature, 45min).



+86-27-59760950

ELKbio@ELKbiotech.com

www.elkbiotech.com

23-2, No.388 Gaoxin 2nd Road,Wuhan East Lake Hi-tech Development Zone, Hubei , P.R.C