



SRRT rabbit pAb

Cat No.:ES12950

For research use only

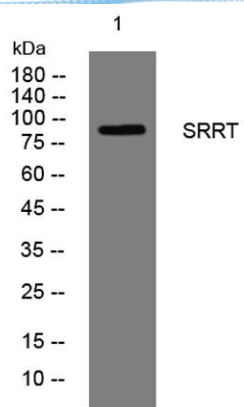
Overview

Product Name	SRRT rabbit pAb
Host species	Rabbit
Applications	WB
Species Cross-Reactivity	Human; Mouse
Recommended dilutions	WB 1: 500-2000
Immunogen	Synthesized peptide derived from human SRRT AA range: 403-453
Specificity	This antibody detects endogenous levels of SRRT at Human/Mouse
Formulation	Liquid in PBS containing 50% glycerol, 0.5% BSA and 0.02% sodium azide.
Storage	Store at -20°C. Avoid repeated freeze-thaw cycles.
Protein Name	SRRT
Gene Name	SRRT ARS2 ASR2
Cellular localization	Nucleus, nucleoplasm . Cytoplasm . Predominantly nuclear. Shuttles between the nucleus and the cytoplasm in a CRM1-dependent way (By similarity). .
Purification	The antibody was affinity-purified from rabbit antiserum by affinity-chromatography using epitope-specific immunogen.
Clonality	Polyclonal
Concentration	1 mg/ml
Observed band	
Human Gene ID	51593
Human Swiss-Prot Number	Q9BXP5
Alternative Names	
Background	





ELK Biotechnology



Western blot analysis of lysates from MDA-MB cells,
primary antibody was diluted at 1:1000, 4° over night



+86-27-59760950

ELKbio@ELKbiotech.com

www.elkbiotech.com

23-2, No.388 Gaoxin 2nd Road, Wuhan East Lake Hi-tech Development Zone, Hubei, P.R.C.