

# LYPD8 rabbit pAb

Cat No.:ES15069

For research use only

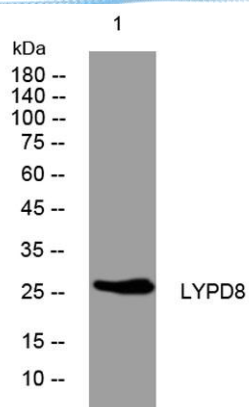
## Overview

|                          |  |
|--------------------------|--|
| Product Name             | LYPD8 rabbit pAb   |
| Host species             | Rabbit   |
| Applications             | WB   |
| Species Cross-Reactivity | Human; Mouse   |
| Recommended dilutions    | WB 1: 500-2000   |
| Immunogen                | Synthesized peptide derived from human LYPD8 AA range: 42-92   |
| Specificity              | This antibody detects endogenous levels of LYPD8 at Human/Mouse  |
| Formulation              | Liquid in PBS containing 50% glycerol, 0.5% BSA and 0.02% sodium azide.  |
| Storage                  | Store at -20°C. Avoid repeated freeze-thaw cycles.   |
| Protein Name             | LYPD8  |
| Gene Name                | LYPD8 UNQ511/PRO1026   |
| Cellular localization    | Cell membrane ; Lipid-anchor, GPI-anchor . Secreted . Secreted into the lumen of the colon following cleavage of the GPI-anchor. . |
| Purification             | The antibody was affinity-purified from rabbit antiserum by affinity-chromatography using epitope-specific immunogen.              |
| Clonality                | Polyclonal   |
| Concentration            | 1 mg/ml  |
| Observed band            |  |
| Human Gene ID            | 646627   |
| Human Swiss-Prot Number  | Q6UX82   |
| Alternative Names        |  |
| Background               |  |





**ELK Biotechnology**



Western blot analysis of lysates from HpeG2 cells, primary antibody was diluted at 1:1000, 4° over night



+86-27-59760950

ELKbio@ELKbiotech.com

[www.elkbiotech.com](http://www.elkbiotech.com)

23-2, No.388 Gaoxin 2nd Road, Wuhan East Lake Hi-tech Development Zone, Hubei, P.R.C.