

# ULK1 (phospho-Ser638) rabbit pAb

Cat No.:ES12426

For research use only

## Overview

Product Name	ULK1 (phospho-Ser638) rabbit pAb
Host species	Rabbit
Applications	WB
Species Cross-Reactivity	Human;Mouse
Recommended dilutions	WB 1:1000-2000
Immunogen	Synthesized phospho peptide around human ULK1 (Ser638)
Specificity	This antibody detects endogenous levels of Human Mouse ULK1 (phospho-Ser638)
Formulation	Liquid in PBS containing 50% glycerol, 0.5% BSA and 0.02% sodium azide.
Storage	Store at -20°C. Avoid repeated freeze-thaw cycles.
Protein Name	ULK1 (Ser638)
Gene Name	ULK1 KIAA0722
Cellular localization	Cytoplasm, cytosol . Preautophagosomal structure . Under starvation conditions, is localized to punctate structures primarily representing the isolation membrane that sequesters a portion of the cytoplasm resulting in the formation of an autophagosome. .
Purification	The antibody was affinity-purified from rabbit antiserum by affinity-chromatography using epitope-specific immunogen.
Clonality	Polyclonal
Concentration	1 mg/ml
Observed band	115kD
Human Gene ID	8408
Human Swiss-Prot Number	O75385
Alternative Names	Serine/threonine-protein kinase ULK1 (EC 2.7.11.1) (Autophagy-related protein 1 homolog) (ATG1) (hATG1) (Unc-51-like kinase 1)

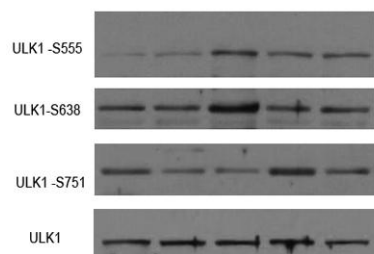
## Background





**ELK Biotechnology**

Western Blot analysis of various cell lysis(provided by our customer). Primary Antibody was diluted at 1:1000. Secondary antibody(catalog#:RS23920) was diluted at 1:10000



+86-27-59760950

[ELKbio@ELKbiotech.com](mailto:ELKbio@ELKbiotech.com)

[www.elkbiotech.com](http://www.elkbiotech.com)

23-2, No.388 Gaoxin 2nd Road,Wuhan East Lake Hi-tech Development Zone, Hubei , P.R.C