

KBTB8 rabbit pAb

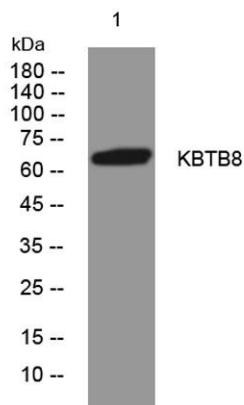
Cat No.:ES15354

For research use only

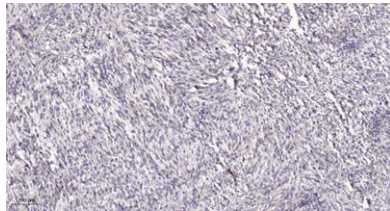
Overview

Product Name	KBTB8 rabbit pAb
Host species	Rabbit
Applications	WB;ELISA;IHC
Species Cross-Reactivity	Human; Mouse;Rat
Recommended dilutions	WB 1:500-2000;IHC-p 1:50-300; ELISA 2000-20000
Immunogen	Synthesized peptide derived from human KBTB8 AA range: 445-495
Specificity	This antibody detects endogenous levels of KBTB8 at Human/Mouse/Rat
Formulation	Liquid in PBS containing 50% glycerol, 0.5% BSA and 0.02% sodium azide.
Storage	Store at -20°C. Avoid repeated freeze-thaw cycles.
Protein Name	KBTB8
Gene Name	KBTBD8 KIAA1842 TAKRP
Cellular localization	Cytoplasm, cytoskeleton, spindle . Golgi apparatus . Translocates to the spindle apparatus during mitosis. .
Purification	The antibody was affinity-purified from rabbit antiserum by affinity-chromatography using epitope-specific immunogen.
Clonality	Polyclonal
Concentration	1 mg/ml
Observed band	
Human Gene ID	84541
Human Swiss-Prot Number	Q8NFY9
Alternative Names	
Background	





Western blot analysis of lysates from MDA-MB cells, primary antibody was diluted at 1:1000, 4° over night



Immunohistochemical analysis of paraffin-embedded human Colon cancer. 1, Antibody was diluted at 1:200(4° overnight). 2, Tris-EDTA, pH9.0 was used for antigen retrieval. 3, Secondary antibody was diluted at 1:200(room temperature, 45min).

