

NAA60 rabbit pAb

Cat No.:ES14574

For research use only

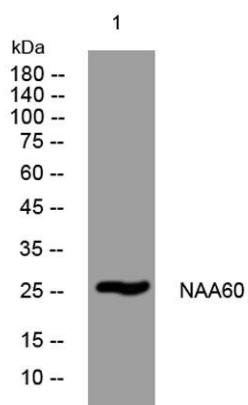
Overview

Product Name	NAA60 rabbit pAb
Host species	Rabbit
Applications	WB
Species Cross-Reactivity	Human; Mouse;Rat
Recommended dilutions	WB 1: 500-2000
Immunogen	Synthesized peptide derived from human NAA60 AA range: 5-55
Specificity	This antibody detects endogenous levels of NAA60 at Human/Mouse/Rat
Formulation	Liquid in PBS containing 50% glycerol, 0.5% BSA and 0.02% sodium azide.
Storage	Store at -20°C. Avoid repeated freeze-thaw cycles.
Protein Name	NAA60
Gene Name	NAA60 HAT4 NAT15 UNQ2771/PRO7155
Cellular localization	Golgi apparatus membrane ; Peripheral membrane protein ; Cytoplasmic side . Probably forms an intramembrane hairpin-like structure in the membrane. .
Purification	The antibody was affinity-purified from rabbit antiserum by affinity-chromatography using epitope-specific immunogen.
Clonality	Polyclonal
Concentration	1 mg/ml
Observed band	
Human Gene ID	79903
Human Swiss-Prot Number	Q9H7X0
Alternative Names	
Background	This gene encodes an enzyme that localizes to the Golgi apparatus, where it transfers an acetyl group to the N-terminus of free proteins. This enzyme acts on histones, and its activity is important for chromatin assembly and chromosome integrity. Alternative splicing and the use of alternative





promoters results in multiple transcript variants. The upstream promoter is located in a differentially methylated region (DMR) and undergoes imprinting; transcript variants originating from this position are expressed from the maternal allele. [provided by RefSeq, Nov 2015],



Western blot analysis of lysates from HeLa cells, primary antibody was diluted at 1:1000, 4° over night

