

NPAP1 rabbit pAb

Cat No.:ES14464

For research use only

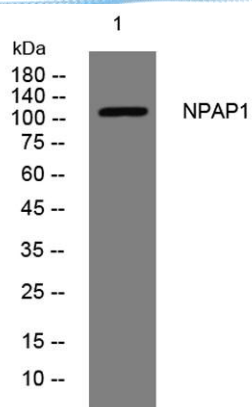
Overview

Product Name	NPAP1 rabbit pAb
Host species	Rabbit
Applications	WB
Species Cross-Reactivity	Human;Rat;Mouse;
Recommended dilutions	WB 1: 500-2000
Immunogen	Synthesized peptide derived from human NPAP1 AA range: 960-1010
Specificity	This antibody detects endogenous levels of NPAP1 at Human
Formulation	Liquid in PBS containing 50% glycerol, 0.5% BSA and 0.02% sodium azide.
Storage	Store at -20°C. Avoid repeated freeze-thaw cycles.
Protein Name	NPAP1
Gene Name	NPAP1 C15orf2
Cellular localization	Nucleus, nucleoplasm . Nucleus inner membrane . Colocalizes with the NPC and nuclear lamins at the nuclear periphery.
Purification	The antibody was affinity-purified from rabbit antiserum by affinity-chromatography using epitope-specific immunogen.
Clonality	Polyclonal
Concentration	1 mg/ml
Observed band	
Human Gene ID	23742
Human Swiss-Prot Number	Q9NZP6
Alternative Names	
Background	This gene is located in the Prader-Willi syndrome region on chromosome 15. This gene is biallelically expressed in adult testis and brain but is paternally imprinted in fetal brain. Defects in this gene may be associated with Prader-Willi syndrome. [provided by RefSeq, Aug 2012],





ELK Biotechnology



Western blot analysis of lysates from KB cells, primary antibody was diluted at 1:1000, 4° over night



+86-27-59760950

ELKbio@ELKbiotech.com

www.elkbiotech.com

23-2, No.388 Gaoxin 2nd Road, Wuhan East Lake Hi-tech Development Zone, Hubei, P.R.C.