

MLK3 (Phospho Thr277+Ser281) rabbit pAb

Cat No.:ES20162

For research use only

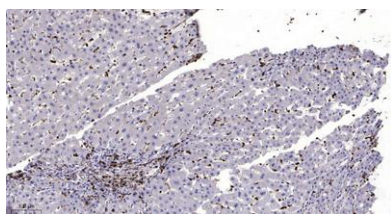
Overview

Product Name	MLK3 (Phospho Thr277+Ser281) rabbit pAb
Host species	Rabbit
Applications	WB;ELISA;IHC
Species Cross-Reactivity	Human;Mouse;Rat
Recommended dilutions	WB 1:500-2000;IHC-p 1:50-300; ELISA 2000-20000
Immunogen	Synthesized peptide derived from human MLK3 (Phospho Thr277+Ser281)
Specificity	This antibody detects endogenous levels of Human,Mouse,Rat MLK3 (Phospho Thr277+Ser281)
Formulation	Liquid in PBS containing 50% glycerol, 0.5% BSA and 0.02% sodium azide.
Storage	Store at -20°C. Avoid repeated freeze-thaw cycles.
Protein Name	MLK3 (Phospho Thr277+Ser281)
Gene Name	MAP3K11 MLK3 PTK1 SPRK
Cellular localization	Cytoplasm, cytoskeleton, microtubule organizing center, centrosome . Location is cell cycle dependent.
Purification	The antibody was affinity-purified from rabbit antiserum by affinity-chromatography using epitope-specific immunogen.
Clonality	Polyclonal
Concentration	1 mg/ml
Observed band	
Human Gene ID	4296
Human Swiss-Prot Number	Q16584
Alternative Names	Mitogen-activated protein kinase kinase kinase 11 (EC 2.7.11.25;Mixed lineage kinase 3;Src-homology 3 domain-containing proline-rich kinase)
Background	The protein encoded by this gene is a member of the serine/threonine kinase family. This kinase contains a SH3 domain and a leucine zipper-basic motif. This kinase preferentially activates MAPK8/JNK kinase, and functions as a positive





regulator of JNK signaling pathway. This kinase can directly phosphorylate, and activates I κ B kinase alpha and beta, and is found to be involved in the transcription activity of NF-kappaB mediated by Rho family GTPases and CDC42. [provided by RefSeq, Jul 2008],



Immunohistochemical analysis of paraffin-embedded human liver cancer. 1, Antibody was diluted at 1:200(4° overnight). 2, Tris-EDTA,pH9.0 was used for antigen retrieval. 3,Secondary antibody was diluted at 1:200(room temperature, 45min).

