

FILA2 rabbit pAb

Cat No.:ES16461

For research use only

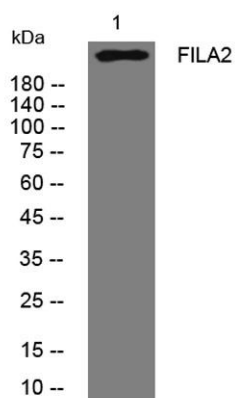
Overview

Product Name	FILA2 rabbit pAb
Host species	Rabbit
Applications	WB
Species Cross-Reactivity	Human; Mouse
Recommended dilutions	WB 1: 500-2000
Immunogen	Synthesized peptide derived from human FILA2 AA range: 402-452
Specificity	This antibody detects endogenous levels of FILA2 at Human/Mouse
Formulation	Liquid in PBS containing 50% glycerol, 0.5% BSA and 0.02% sodium azide.
Storage	Store at -20°C. Avoid repeated freeze-thaw cycles.
Protein Name	FILA2
Gene Name	FLG2 IFPS
Cellular localization	Cytoplasm . Cytoplasmic granule . In the stratum corneum of the epidermis, dispersed diffusely throughout the cytoplasm, while in the stratum granulosum, localized within keratohyalin granules (PubMed:19384417) (PubMed:21531719). In granular keratinocytes
Purification	The antibody was affinity-purified from rabbit antiserum by affinity-chromatography using epitope-specific immunogen.
Clonality	Polyclonal
Concentration	1 mg/ml
Observed band	
Human Gene ID	388698
Human Swiss-Prot Number	Q5D862
Alternative Names	
Background	The filaggrin-like protein encoded by this gene is upregulated by calcium, proteolyzed by calpain 1, and is involved in epithelial homeostasis. The encoded protein is required for proper cornification





in skin, with defects in this gene being associated with skin diseases. This protein also has a function in skin barrier protection. In fact, in addition to providing a physical barrier, C-terminal fragments of this protein display antimicrobial activity against *P. aeruginosa*. [provided by RefSeq, Dec 2015],



Western blot analysis of lysates from U2OS cells, primary antibody was diluted at 1:1000, 4° over night

