

# ISPD rabbit pAb

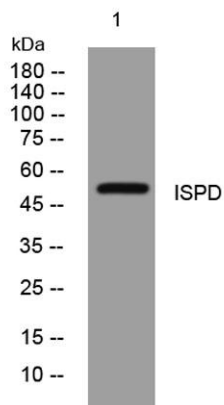
Cat No.:ES15414

For research use only

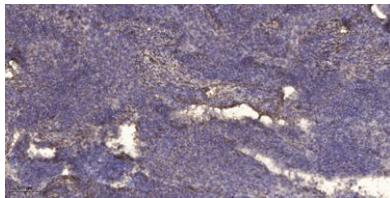
## Overview

Product Name	ISPD rabbit pAb
Host species	Rabbit
Applications	WB;ELISA;IHC
Species Cross-Reactivity	Human; Mouse;Rat
Recommended dilutions	WB 1:500-2000;IHC-p 1:50-300; ELISA 2000-20000
Immunogen	Synthesized peptide derived from human ISPD AA range: 301-351
Specificity	This antibody detects endogenous levels of ISPD at Human/Mouse/Rat
Formulation	Liquid in PBS containing 50% glycerol, 0.5% BSA and 0.02% sodium azide.
Storage	Store at -20°C. Avoid repeated freeze-thaw cycles.
Protein Name	ISPD
Gene Name	ISPD
Cellular localization	Cytoplasm, cytosol .
Purification	The antibody was affinity-purified from rabbit antiserum by affinity-chromatography using epitope-specific immunogen.
Clonality	Polyclonal
Concentration	1 mg/ml
Observed band	
Human Gene ID	729920
Human Swiss-Prot Number	A4D126
Alternative Names	
Background	This gene encodes a 2-C-methyl-D-erythritol 4-phosphate cytidyltransferase-like protein. Mutations in this gene are the cause of Walker-Warburg syndrome. Alternate splicing results in multiple transcript variants. [provided by RefSeq, May 2012],





Western blot analysis of lysates from THP-1 cells, primary antibody was diluted at 1:1000, 4° over night



Immunohistochemical analysis of paraffin-embedded human cervical carcinoma. 1, Antibody was diluted at 1:200(4° overnight). 2, Tris-EDTA,pH9.0 was used for antigen retrieval. 3,Secondary antibody was diluted at 1:200(room temperature, 45min).

