

# PRAP1 rabbit pAb

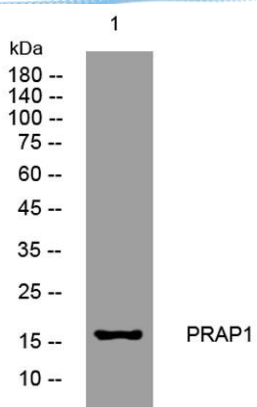
Cat No.:ES13969

For research use only

## Overview

Product Name	PRAP1 rabbit pAb
Host species	Rabbit
Applications	WB
Species Cross-Reactivity	Human; Mouse;Rat
Recommended dilutions	WB 1: 500-2000
Immunogen	Synthesized peptide derived from human PRAP1 AA range: 84-134
Specificity	This antibody detects endogenous levels of PRAP1 at Human/Mouse/Rat
Formulation	Liquid in PBS containing 50% glycerol, 0.5% BSA and 0.02% sodium azide.
Storage	Store at -20°C. Avoid repeated freeze-thaw cycles.
Protein Name	PRAP1
Gene Name	PRAP1 UPA UNQ608/PRO1195
Cellular localization	Secreted . Endoplasmic reticulum .
Purification	The antibody was affinity-purified from rabbit antiserum by affinity-chromatography using epitope-specific immunogen.
Clonality	Polyclonal
Concentration	1 mg/ml
Observed band	
Human Gene ID	118471
Human Swiss-Prot Number	Q96NZ9
Alternative Names	
Background	





Western blot analysis of lysates from HpeG2 cells, primary antibody was diluted at 1:1000, 4° over night

