

SO4C1 rabbit pAb

Cat No.:ES13027

For research use only

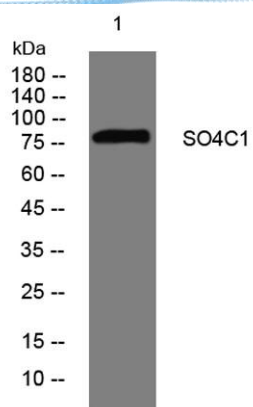
Overview

Product Name	SO4C1 rabbit pAb
Host species	Rabbit
Applications	WB
Species Cross-Reactivity	Human; Mouse;Rat
Recommended dilutions	WB 1: 500-2000
Immunogen	Synthesized peptide derived from human SO4C1 AA range: 77-127
Specificity	This antibody detects endogenous levels of SO4C1 at Human/Mouse/Rat
Formulation	Liquid in PBS containing 50% glycerol, 0.5% BSA and 0.02% sodium azide.
Storage	Store at -20°C. Avoid repeated freeze-thaw cycles.
Protein Name	SO4C1
Gene Name	SLCO4C1 OATP4C1 OATPX SLC21A20
Cellular localization	Basolateral cell membrane ; Multi-pass membrane protein . Detected at the basolateral membrane of the proximal tubule cell in the kidney. .
Purification	The antibody was affinity-purified from rabbit antiserum by affinity-chromatography using epitope-specific immunogen.
Clonality	Polyclonal
Concentration	1 mg/ml
Observed band	
Human Gene ID	353189
Human Swiss-Prot Number	Q6ZQN7
Alternative Names	
Background	SLCO4C1 belongs to the organic anion transporter (OATP) family. OATPs are involved in the membrane transport of bile acids, conjugated steroids, thyroid hormone, eicosanoids, peptides, and numerous drugs in many tissues (Mikkaichi et al., 2004 [PubMed 14993604]).[supplied by OMIM, Mar 2008],





ELK Biotechnology



Western blot analysis of lysates from HeLa cells, primary antibody was diluted at 1:1000, 4° over night



+86-27-59760950

ELKbio@ELKbiotech.com

www.elkbiotech.com

23-2, No.388 Gaoxin 2nd Road, Wuhan East Lake Hi-tech Development Zone, Hubei, P.R.C.