

M4A10 rabbit pAb

Cat No.:ES15062

For research use only

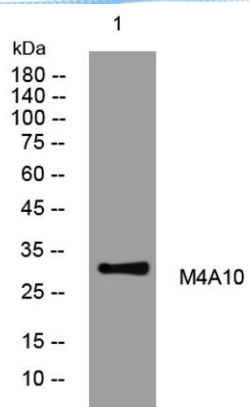
Overview

Product Name	M4A10 rabbit pAb
Host species	Rabbit
Applications	WB
Species Cross-Reactivity	Human; Mouse
Recommended dilutions	WB 1: 500-2000
Immunogen	Synthesized peptide derived from human M4A10 AA range: 6-56
Specificity	This antibody detects endogenous levels of M4A10 at Human/Mouse
Formulation	Liquid in PBS containing 50% glycerol, 0.5% BSA and 0.02% sodium azide.
Storage	Store at -20°C. Avoid repeated freeze-thaw cycles.
Protein Name	M4A10
Gene Name	MS4A10 CD20L7 MS4A9
Cellular localization	Membrane ; Multi-pass membrane protein .
Purification	The antibody was affinity-purified from rabbit antiserum by affinity-chromatography using epitope-specific immunogen.
Clonality	Polyclonal
Concentration	1 mg/ml
Observed band	
Human Gene ID	341116
Human Swiss-Prot Number	Q96PG2
Alternative Names	
Background	Most MS4A genes, including MS4A10, encode proteins with at least 4 potential transmembrane domains and N- and C-terminal cytoplasmic domains encoded by distinct exons.[supplied by OMIM, Apr 2004],





ELK Biotechnology



Western blot analysis of lysates from HeLa cells, primary antibody was diluted at 1:1000, 4° over night



+86-27-59760950

ELKbio@ELKbiotech.com

www.elkbiotech.com

23-2, No.388 Gaoxin 2nd Road, Wuhan East Lake Hi-tech Development Zone, Hubei, P.R.C.