

# PDLI2 rabbit pAb

Cat No.:ES14176

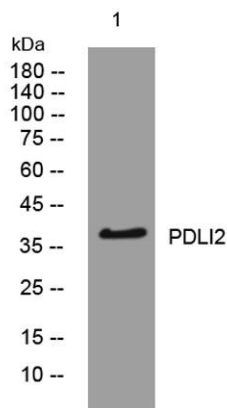
For research use only

## Overview

Product Name	PDLI2 rabbit pAb
Host species	Rabbit
Applications	WB
Species Cross-Reactivity	Human; Mouse;Rat
Recommended dilutions	WB 1:500-2000
Immunogen	Synthesized peptide derived from human PDLI2 AA range: 190-240
Specificity	This antibody detects endogenous levels of PDLI2 at Human/Mouse/Rat
Formulation	Liquid in PBS containing 50% glycerol, 0.5% BSA and 0.02% sodium azide.
Storage	Store at -20°C. Avoid repeated freeze-thaw cycles.
Protein Name	PDLI2
Gene Name	PDLIM2 PP6345
Cellular localization	Cytoplasm . Nucleus . May be partially nuclear.; [Isoform 1]: Cytoplasm, cytoskeleton. Colocalizes with beta-1 integrin (ITGB1) and alpha-actinin but not with paxillin (PXN).; [Isoform 2]: Cytoplasm, cytoskeleton.; [Isoform 3]: Nucleus.
Purification	The antibody was affinity-purified from rabbit antiserum by affinity-chromatography using epitope-specific immunogen.
Clonality	Polyclonal
Concentration	1 mg/ml
Observed band	38kD
Human Gene ID	64236
Human Swiss-Prot Number	Q96JY6
Alternative Names	PDZ and LIM domain protein 2 (PDZ-LIM protein mystique)
Background	This gene encodes a member of the ALP subfamily of PDZ-LIM domain proteins. The encoded protein suppresses anchorage-dependent growth and promotes cell migration and adhesion through



interactions with the actin cytoskeleton via the PDZ domain. The encoded protein is also a putative tumor suppressor protein, and decreased expression of this gene is associated with several malignancies including breast cancer and adult T-cell leukemia. Alternatively spliced transcript variants encoding multiple isoforms have been observed for this gene. [provided by RefSeq, Oct 2011],



Western blot analysis of lysates from 293T cells, primary antibody was diluted at 1:1000, 4° over night

