

# EFHD1 rabbit pAb

Cat No.:ES20767

For research use only

## Overview

Product Name	EFHD1 rabbit pAb
Host species	Rabbit
Applications	WB
Species Cross-Reactivity	Human
Recommended dilutions	WB: 1:1000
Immunogen	Recombinant Protein of EF-hand domain-containing protein D1
Specificity	The antibody detects endogenous EFHD1 proteins.
Formulation	Liquid in PBS containing 50% glycerol, 0.5% BSA and 0.02% sodium azide.
Storage	Store at -20°C. Avoid repeated freeze-thaw cycles.
Protein Name	EF-hand domain-containing protein D1
Gene Name	EFHD1
Cellular localization	Mitochondrion inner membrane .
Purification	The antibody was affinity-purified from rabbit antiserum by affinity-chromatography using epitope-specific immunogen.
Clonality	Polyclonal
Concentration	
Observed band	27kD
Human Gene ID	80303
Human Swiss-Prot Number	Q9BUP0
Alternative Names	EF-hand domain-containing protein D1 (EF-hand domain-containing protein 1) (Swiprosin-2)
Background	This gene encodes a member of the EF-hand super family of calcium binding proteins, which are involved in a variety of cellular processes including mitosis, synaptic transmission, and cytoskeletal rearrangement. The protein encoded by this gene is composed of an N-terminal disordered region, proline-rich elements, two EF-hands, and a C-terminal coiled-coil domain. This protein has been shown to associate with the mitochondrial inner

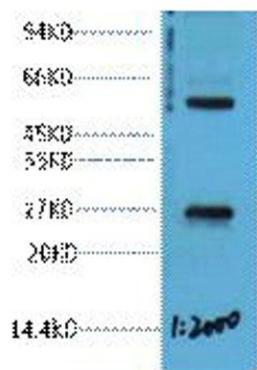




**ELK Biotechnology**

membrane, and in HeLa cells, acts as a novel mitochondrial calcium ion sensor for mitochondrial flash activation. Alternative splicing results in multiple transcript variants. [provided by RefSeq, Jul 2016],

Western blot analysis of 293T cell lysate, diluted at 1:2000. Secondary antibody(catalog#:RS0002) was diluted at 1:20000



+86-27-59760950

[ELKbio@ELKbiotech.com](mailto:ELKbio@ELKbiotech.com)

[www.elkbiotech.com](http://www.elkbiotech.com)

23-2, No.388 Gaoxin 2nd Road,Wuhan East Lake Hi-tech Development Zone, Hubei , P.R.C