

# MMP28 (Cleaved-Phe123) rabbit pAb

Cat No.:ES20028

For research use only

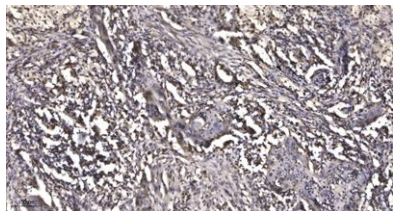
## Overview

Product Name	MMP28 (Cleaved-Phe123) rabbit pAb
Host species	Rabbit
Applications	WB;IHC
Species Cross-Reactivity	Human;Rat;Mouse;
Recommended dilutions	WB 1:500-2000;IHC-p 1:50-300
Immunogen	Synthesized peptide derived from human MMP28 (Cleaved-Phe123)
Specificity	This antibody detects endogenous levels of Human MMP28 (Cleaved-Phe123, protein was cleaved amino acid sequence between 123-124 )
Formulation	Liquid in PBS containing 50% glycerol, 0.5% BSA and 0.02% sodium azide.
Storage	Store at -20°C. Avoid repeated freeze-thaw cycles.
Protein Name	MMP28 (Cleaved-Phe123)
Gene Name	MMP28 MMP25 UNQ1893/PRO4339
Cellular localization	Secreted, extracellular space, extracellular matrix.
Purification	The antibody was affinity-purified from rabbit antiserum by affinity-chromatography using epitope-specific immunogen.
Clonality	Polyclonal
Concentration	1 mg/ml
Observed band	44 57kD
Human Gene ID	79148
Human Swiss-Prot Number	Q9H239
Alternative Names	Matrix metalloproteinase-28 (MMP-28;EC 3.4.24.-;Epilysin)
Background	





**ELK Biotechnology**



Immunohistochemical analysis of paraffin-embedded human Squamous cell carcinoma of lung. 1, Antibody was diluted at 1:200(4° overnight). 2, Tris-EDTA,pH9.0 was used for antigen retrieval. 3,Secondary antibody was diluted at 1:200(room temperature, 45min).



+86-27-59760950

[ELKbio@ELKbiotech.com](mailto:ELKbio@ELKbiotech.com)

[www.elkbiotech.com](http://www.elkbiotech.com)

23-2, No.388 Gaoxin 2nd Road,Wuhan East Lake Hi-tech Development Zone, Hubei , P.R.C