

S2542 rabbit pAb

Cat No.:ES13256

For research use only

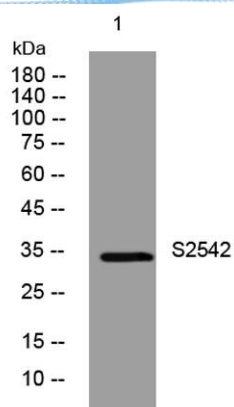
Overview

Product Name	S2542 rabbit pAb
Host species	Rabbit
Applications	WB
Species Cross-Reactivity	Human; Mouse;Rat
Recommended dilutions	WB 1: 500-2000
Immunogen	Synthesized peptide derived from human S2542 AA range: 7-57
Specificity	This antibody detects endogenous levels of S2542 at Human/Mouse/Rat
Formulation	Liquid in PBS containing 50% glycerol, 0.5% BSA and 0.02% sodium azide.
Storage	Store at -20°C. Avoid repeated freeze-thaw cycles.
Protein Name	S2542
Gene Name	SLC25A42
Cellular localization	Mitochondrion inner membrane ; Multi-pass membrane protein .
Purification	The antibody was affinity-purified from rabbit antiserum by affinity-chromatography using epitope-specific immunogen.
Clonality	Polyclonal
Concentration	1 mg/ml
Observed band	
Human Gene ID	284439
Human Swiss-Prot Number	Q86VD7
Alternative Names	
Background	This gene encodes a solute carrier family 25 protein. Solute carrier family 25 proteins are localized to mitochondria and play critical roles in the transport of molecules across the inner mitochondrial membrane. The encoded protein is a mitochondrial transporter for coenzyme A (CoA) and adenosine 3',5'-diphosphate. [provided by RefSeq, Feb 2012],





ELK Biotechnology



Western blot analysis of lysates from HEK293 cells,
primary antibody was diluted at 1:1000, 4° over night



+86-27-59760950

ELKbio@ELKbiotech.com

www.elkbiotech.com

23-2, No.388 Gaoxin 2nd Road, Wuhan East Lake Hi-tech Development Zone, Hubei, P.R.C.