

DPYL5 rabbit pAb

Cat No.:ES16903

For research use only

Overview

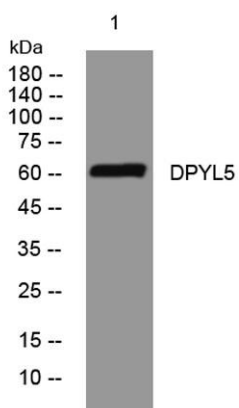
Product Name	DPYL5 rabbit pAb
Host species	Rabbit
Applications	WB
Species Cross-Reactivity	Human; Mouse;Rat
Recommended dilutions	WB 1:500-2000
Immunogen	Synthesized peptide derived from human DPYL5 AA range: 396-446
Specificity	This antibody detects endogenous levels of DPYL5 at Human/Mouse/Rat
Formulation	Liquid in PBS containing 50% glycerol, 0.5% BSA and 0.02% sodium azide.
Storage	Store at -20°C. Avoid repeated freeze-thaw cycles.
Protein Name	DPYL5
Gene Name	DPYSL5 CRMP5 ULIP6
Cellular localization	Cytoplasm .
Purification	The antibody was affinity-purified from rabbit antiserum by affinity-chromatography using epitope-specific immunogen.
Clonality	Polyclonal
Concentration	1 mg/ml
Observed band	60kD
Human Gene ID	56896
Human Swiss-Prot Number	Q9BPU6
Alternative Names	Dihydropyrimidinase-related protein 5 (DRP-5) (CRMP3-associated molecule) (CRAM) (Collapsin response mediator protein 5) (CRMP-5) (UNC33-like phosphoprotein 6) (ULIP-6)
Background	This gene encodes a member of the CRMP (collapsing response mediator protein) family thought to be involved in neural development. Antibodies to the encoded protein were found in some patients with neurologic symptoms who had paraneoplastic syndrome. A pseudogene of this





ELK Biotechnology

gene is found on chromosome 11. Multiple alternatively spliced variants, encoding the same protein, have been identified. [provided by RefSeq, Dec 2011],



Western blot analysis of lysates from HeLa cells, primary antibody was diluted at 1:1000, 4° over night



+86-27-59760950

ELKbio@ELKbiotech.com

www.elkbiotech.com

23-2, No.388 Gaoxin 2nd Road, Wuhan East Lake Hi-tech Development Zone, Hubei, P.R.C.