



KI3X1 rabbit pAb

Cat No.:ES15322

For research use only

Overview

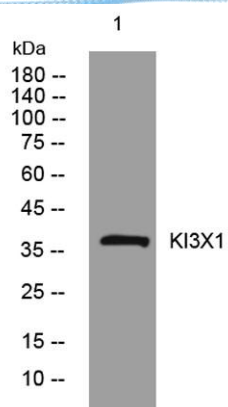
Product Name	KI3X1 rabbit pAb
Host species	Rabbit
Applications	WB
Species Cross-Reactivity	Human;Rat;Mouse;
Recommended dilutions	WB 1:500-2000
Immunogen	Synthesized peptide derived from human KI3X1 AA range: 100-150
Specificity	This antibody detects endogenous levels of KI3X1 at Human
Formulation	Liquid in PBS containing 50% glycerol, 0.5% BSA and 0.02% sodium azide.
Storage	Store at -20°C. Avoid repeated freeze-thaw cycles.
Protein Name	KI3X1
Gene Name	KIR3DX1 KIR3DL0 LENG12
Cellular localization	Secreted .
Purification	The antibody was affinity-purified from rabbit antiserum by affinity-chromatography using epitope-specific immunogen.
Clonality	Polyclonal
Concentration	1 mg/ml
Observed band	38kD
Human Gene ID	
Human Swiss-Prot Number	Q9H7L2
Alternative Names	Putative killer cell immunoglobulin-like receptor-like protein KIR3DX1 (Leukocyte receptor cluster member 12)

Background





ELK Biotechnology



Western blot analysis of lysates from SH-SY5Y cells,
primary antibody was diluted at 1:1000, 4° over night



+86-27-59760950

ELKbio@ELKbiotech.com

www.elkbiotech.com

23-2, No.388 Gaoxin 2nd Road, Wuhan East Lake Hi-tech Development Zone, Hubei, P.R.C.