

IFT27 rabbit pAb

Cat No.:ES15525

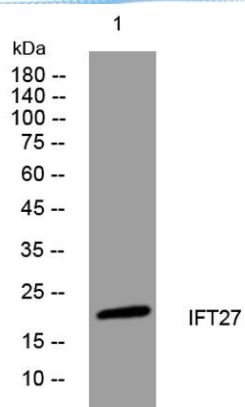
For research use only

Overview

Product Name	IFT27 rabbit pAb
Host species	Rabbit
Applications	WB
Species Cross-Reactivity	Human; Mouse
Recommended dilutions	WB 1: 500-2000
Immunogen	Synthesized peptide derived from human IFT27 AA range: 8-58
Specificity	This antibody detects endogenous levels of IFT27 at Human/Mouse
Formulation	Liquid in PBS containing 50% glycerol, 0.5% BSA and 0.02% sodium azide.
Storage	Store at -20°C. Avoid repeated freeze-thaw cycles.
Protein Name	IFT27
Gene Name	IFT27 RABL4 RAYL
Cellular localization	Cell projection, cilium . Cytoplasm . Cell projection, cilium, flagellum . Localizes to the sperm flagellum. .
Purification	The antibody was affinity-purified from rabbit antiserum by affinity-chromatography using epitope-specific immunogen.
Clonality	Polyclonal
Concentration	1 mg/ml
Observed band	
Human Gene ID	11020
Human Swiss-Prot Number	Q9BW83
Alternative Names	
Background	This gene encodes a GTP-binding protein that is a core component of the intraflagellar transport complex B. Characterization of the similar Chlamydomonas protein indicates a function in cell cycle control. Alternative splicing of this gene results in multiple transcript variants. [provided by RefSeq, Jan 2012],



ELK Biotechnology



Western blot analysis of lysates from 293T cells, primary antibody was diluted at 1:1000, 4° over night