

CRY2 rabbit pAb

Cat No.:ES17214

For research use only

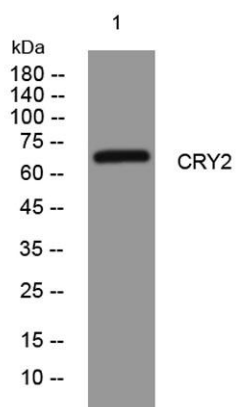
Overview

Product Name	CRY2 rabbit pAb
Host species	Rabbit
Applications	WB
Species Cross-Reactivity	Human; Mouse;Rat
Recommended dilutions	WB 1: 500-2000
Immunogen	Synthesized peptide derived from human CRY2 AA range: 181-231
Specificity	This antibody detects endogenous levels of CRY2 at Human/Mouse/Rat
Formulation	Liquid in PBS containing 50% glycerol, 0.5% BSA and 0.02% sodium azide.
Storage	Store at -20°C. Avoid repeated freeze-thaw cycles.
Protein Name	CRY2
Gene Name	CRY2 KIAA0658
Cellular localization	Cytoplasm . Nucleus . Translocated to the nucleus through interaction with other Clock proteins such as PER2 or ARNTL.
Purification	The antibody was affinity-purified from rabbit antiserum by affinity-chromatography using epitope-specific immunogen.
Clonality	Polyclonal
Concentration	1 mg/ml
Observed band	
Human Gene ID	1408
Human Swiss-Prot Number	Q49AN0
Alternative Names	
Background	This gene encodes a flavin adenine dinucleotide-binding protein that is a key component of the circadian core oscillator complex, which regulates the circadian clock. This gene is upregulated by CLOCK/ARNTL heterodimers but then represses this upregulation in a feedback loop using PER/CRY heterodimers to interact with





CLOCK/ARNTL. Polymorphisms in this gene have been associated with altered sleep patterns. The encoded protein is widely conserved across plants and animals. Two transcript variants encoding different isoforms have been found for this gene. [provided by RefSeq, Feb 2014],



Western blot analysis of lysates from U2OS cells, primary antibody was diluted at 1:1000, 4° over night

