



DCDC1 rabbit pAb

Cat No.:ES16995

For research use only

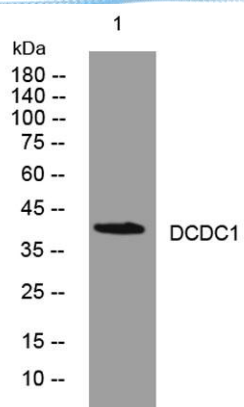
Overview

Product Name	DCDC1 rabbit pAb
Host species	Rabbit
Applications	WB
Species Cross-Reactivity	Human;Rat;Mouse;
Recommended dilutions	WB 1:500-2000
Immunogen	Synthesized peptide derived from human DCDC1 AA range: 111-161
Specificity	This antibody detects endogenous levels of DCDC1 at Human
Formulation	Liquid in PBS containing 50% glycerol, 0.5% BSA and 0.02% sodium azide.
Storage	Store at -20°C. Avoid repeated freeze-thaw cycles.
Protein Name	DCDC1
Gene Name	DCDC1
Cellular localization	intracellular,cytoplasm,
Purification	The antibody was affinity-purified from rabbit antiserum by affinity-chromatography using epitope-specific immunogen.
Clonality	Polyclonal
Concentration	1 mg/ml
Observed band	38kD
Human Gene ID	341019
Human Swiss-Prot Number	P59894
Alternative Names	Doublecortin domain-containing protein 1
Background	This gene encodes a member of the doublecortin family. The protein encoded by this gene is a hydrophilic, intracellular protein. It contains a single doublecortin domain and is unable to bind microtubules and to regulate microtubule polymerization. This gene is mainly expressed in adult testis. It does not have a mouse homolog. [provided by RefSeq, Sep 2010],





ELK Biotechnology



Western blot analysis of lysates from MCF-7 cells, primary antibody was diluted at 1:1000, 4° over night



+86-27-59760950

ELKbio@ELKbiotech.com

www.elkbiotech.com

23-2, No.388 Gaoxin 2nd Road, Wuhan East Lake Hi-tech Development Zone, Hubei, P.R.C.