



LAT4 rabbit pAb

Cat No.:ES15192

For research use only

Overview

Product Name	LAT4 rabbit pAb
Host species	Rabbit
Applications	WB
Species Cross-Reactivity	Human; Mouse
Recommended dilutions	WB 1:500-2000
Immunogen	Synthesized peptide derived from human LAT4 AA range: 122-172
Specificity	This antibody detects endogenous levels of LAT4 at Human/Mouse
Formulation	Liquid in PBS containing 50% glycerol, 0.5% BSA and 0.02% sodium azide.
Storage	Store at -20°C. Avoid repeated freeze-thaw cycles.
Protein Name	LAT4
Gene Name	SLC43A2 LAT4 PP7664
Cellular localization	Membrane ; Multi-pass membrane protein .
Purification	The antibody was affinity-purified from rabbit antiserum by affinity-chromatography using epitope-specific immunogen.
Clonality	Polyclonal
Concentration	1 mg/ml
Observed band	60kD
Human Gene ID	124935
Human Swiss-Prot Number	Q8N370
Alternative Names	Large neutral amino acids transporter small subunit 4 (L-type amino acid transporter 4) (Solute carrier family 43 member 2)
Background	This gene encodes a member of the L-amino acid transporter-3 or SLC43 family of transporters. The encoded protein mediates sodium-, chloride-, and pH-independent transport of L-isomers of neutral amino acids, including leucine, phenylalanine, valine and methionine. This protein may contribute to the transfer of amino acids across the placental

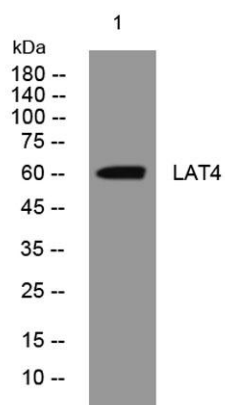




ELK Biotechnology

membrane to the fetus. [provided by RefSeq, Mar 2016],

Western blot analysis of lysates from Hela cells, primary antibody was diluted at 1:1000, 4° over night



+86-27-59760950

ELKbio@ELKbiotech.com

www.elkbiotech.com

23-2, No.388 Gaoxin 2nd Road, Wuhan East Lake Hi-tech Development Zone, Hubei, P.R.C.