

NCF1C rabbit pAb

Cat No.:ES14543

For research use only

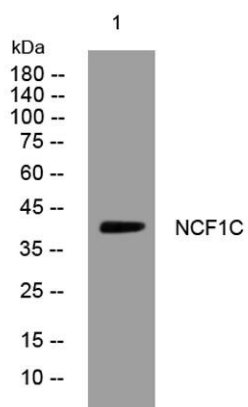
Overview

Product Name	NCF1C rabbit pAb
Host species	Rabbit
Applications	WB
Species Cross-Reactivity	Human;Rat;Mouse;
Recommended dilutions	WB 1: 500-2000
Immunogen	Synthesized peptide derived from human NCF1C AA range: 100-150
Specificity	This antibody detects endogenous levels of NCF1C at Human
Formulation	Liquid in PBS containing 50% glycerol, 0.5% BSA and 0.02% sodium azide.
Storage	Store at -20°C. Avoid repeated freeze-thaw cycles.
Protein Name	NCF1C
Gene Name	NCF1C SH3PXD1C
Cellular localization	Cytoplasm .
Purification	The antibody was affinity-purified from rabbit antiserum by affinity-chromatography using epitope-specific immunogen.
Clonality	Polyclonal
Concentration	1 mg/ml
Observed band	
Human Gene ID	
Human Swiss-Prot Number	A8MVU1
Alternative Names	
Background	The neutrophil cytosolic factor 1 (NCF1) gene encodes the 47 kDa cytosolic subunit of neutrophil NADPH oxidase, which produces superoxide anion. The NCF1 gene is located in close proximity to two highly similar, multi-exon pseudogenes at chromosome 7q11.23, corresponding to this gene record and GeneID:654816. The two pseudogenes contain a dinucleotide deletion (delta-GT) in exon 2 that results in a frameshift and truncation of the





open reading frame, and neither pseudogene is likely to express a protein. Recombination events between the pseudogenes and the functional NCF1 gene can inactivate the NCF1 gene and result in chronic granulomatous disease. [provided by RefSeq, Nov 2009],



Western blot analysis of lysates from Jarkat cells, primary antibody was diluted at 1:1000, 4° over night

