

FBX41 rabbit pAb

Cat No.:ES16503

For research use only

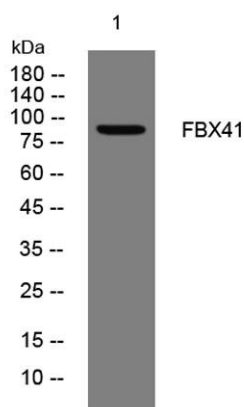
Overview

Product Name	FBX41 rabbit pAb
Host species	Rabbit
Applications	WB
Species Cross-Reactivity	Human; Mouse
Recommended dilutions	WB 1: 500-2000
Immunogen	Synthesized peptide derived from human FBX41 AA range: 622-672
Specificity	This antibody detects endogenous levels of FBX41 at Human/Mouse
Formulation	Liquid in PBS containing 50% glycerol, 0.5% BSA and 0.02% sodium azide.
Storage	Store at -20°C. Avoid repeated freeze-thaw cycles.
Protein Name	FBX41
Gene Name	FBXO41 FBX41 KIAA1940
Cellular localization	
Purification	The antibody was affinity-purified from rabbit antiserum by affinity-chromatography using epitope-specific immunogen.
Clonality	Polyclonal
Concentration	1 mg/ml
Observed band	
Human Gene ID	150726
Human Swiss-Prot Number	Q8TF61
Alternative Names	
Background	This gene encodes a member of the F-box protein family, which is characterized by an approximately 40 amino acid motif, the F-box. F-box proteins constitute one of the four subunits of the SCF ubiquitin protein ligase complex that plays a role in phosphorylation-dependent ubiquitination. F-box proteins are divided into three classes depending on the interaction substrate domain each contains in addition to the F-box motif: FBXW proteins contain





WD-40 domains, FBXL proteins contain leucine-rich repeats, and FBXO proteins contain either different protein-protein interaction modules or no recognizable motifs. The protein encoded by this gene belongs to the FBXO class. [provided by RefSeq, Feb 2014],



Western blot analysis of lysates from 293T cells, primary antibody was diluted at 1:1000, 4° over night

