

OTOAN rabbit pAb

Cat No.:ES14358

For research use only

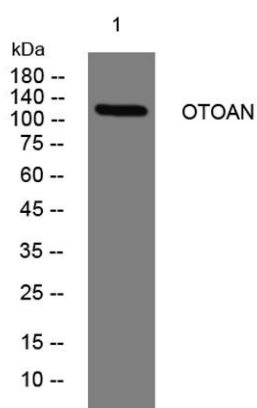
Overview

Product Name	OTOAN rabbit pAb
Host species	Rabbit
Applications	WB
Species Cross-Reactivity	Human; Mouse
Recommended dilutions	WB 1: 500-2000
Immunogen	Synthesized peptide derived from human OTOAN AA range: 1044-1094
Specificity	This antibody detects endogenous levels of OTOAN at Human/Mouse
Formulation	Liquid in PBS containing 50% glycerol, 0.5% BSA and 0.02% sodium azide.
Storage	Store at -20°C. Avoid repeated freeze-thaw cycles.
Protein Name	OTOAN
Gene Name	OTOA
Cellular localization	Apical cell membrane ; Lipid-anchor, GPI-anchor ; Extracellular side . Secreted, extracellular space, extracellular matrix . At the interface between the apical surface of the epithelia and the overlying acellular gel of the tectorial and otoconial membra
Purification	The antibody was affinity-purified from rabbit antiserum by affinity-chromatography using epitope-specific immunogen.
Clonality	Polyclonal
Concentration	1 mg/ml
Observed band	
Human Gene ID	146183
Human Swiss-Prot Number	Q7RTW8
Alternative Names	
Background	The protein encoded by this gene is specifically expressed in the inner ear, and is located at the interface between the apical surface of the inner ear sensory epithelia and their overlying acellular gels. It is proposed that this protein is involved in the





attachment of the inner ear acellular gels to the apical surface of the underlying nonsensory cells. Mutations in this gene are associated with autosomal recessive deafness type 22 (DFNB22). Alternatively spliced transcript variants encoding different isoforms have been found for this gene. [provided by RefSeq, Sep 2009],



Western blot analysis of lysates from A549 cells, primary antibody was diluted at 1:1000, 4°over night

