

STX5 rabbit pAb

Cat No.:ES12888

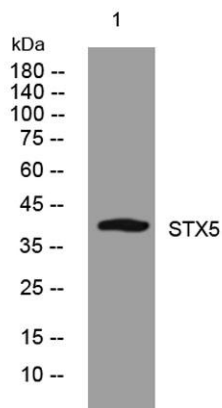
For research use only

Overview

Product Name	STX5 rabbit pAb
Host species	Rabbit
Applications	WB
Species Cross-Reactivity	Human; Mouse;Rat
Recommended dilutions	WB 1:500-2000
Immunogen	Synthesized peptide derived from human STX5 AA range: 233-283
Specificity	This antibody detects endogenous levels of STX5 at Human/Mouse/Rat
Formulation	Liquid in PBS containing 50% glycerol, 0.5% BSA and 0.02% sodium azide.
Storage	Store at -20°C. Avoid repeated freeze-thaw cycles.
Protein Name	STX5
Gene Name	STX5 STX5A
Cellular localization	Endoplasmic reticulum-Golgi intermediate compartment membrane ; Single-pass type IV membrane protein . Golgi apparatus membrane . Localizes throughout the Golgi apparatus, but most abundant in the cis-most cisternae. .
Purification	The antibody was affinity-purified from rabbit antiserum by affinity-chromatography using epitope-specific immunogen.
Clonality	Polyclonal
Concentration	1 mg/ml
Observed band	38kD
Human Gene ID	6811
Human Swiss-Prot Number	Q13190
Alternative Names	Syntaxin-5
Background	This gene encodes a member of the syntaxin or t-SNARE (target-SNAP receptor) family. These proteins are found on cell membranes and serve as the targets for v-SNAREs (vesicle-SNAP receptors), permitting specific synaptic vesicle docking and



fusion. The encoded protein regulates endoplasmic reticulum to Golgi transport and plays a critical role in autophagy. Autoantibodies targeting the encoded protein may be a diagnostic marker for endometriosis. Alternatively spliced transcript variants encoding multiple isoforms have been observed for this gene. [provided by RefSeq, Sep 2011],



Western blot analysis of lysates from HpeG2 cells, primary antibody was diluted at 1:1000, 4° over night

