

# MPP4 rabbit pAb

Cat No.:ES14719

For research use only

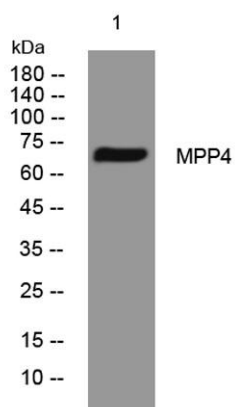
## Overview

Product Name	MPP4 rabbit pAb
Host species	Rabbit
Applications	WB
Species Cross-Reactivity	Human; Mouse;Rat
Recommended dilutions	WB 1: 500-2000
Immunogen	Synthesized peptide derived from human MPP4 AA range: 388-438
Specificity	This antibody detects endogenous levels of MPP4 at Human/Mouse/Rat
Formulation	Liquid in PBS containing 50% glycerol, 0.5% BSA and 0.02% sodium azide.
Storage	Store at -20°C. Avoid repeated freeze-thaw cycles.
Protein Name	MPP4
Gene Name	MPP4 ALS2CR5 DLG6
Cellular localization	Cytoplasm . Detected at the outer limiting membrane (OLM) and in the outer plexiform layer (OPL) of the retina. At the OLM, detected apical to the adherens junction (AJ).
Purification	The antibody was affinity-purified from rabbit antiserum by affinity-chromatography using epitope-specific immunogen.
Clonality	Polyclonal
Concentration	1 mg/ml
Observed band	
Human Gene ID	58538
Human Swiss-Prot Number	Q96JB8
Alternative Names	
Background	This gene encodes a member of the membrane-associated guanylate kinase (MAGUK) protein family, with an N-terminal PDZ domain, a central src homology 3 region (SH3), and a C-terminal guanylate kinase-like (GUK) domain. The protein is localized to the outer limiting membrane





in the retina, and is thought to function in photoreceptor polarity and the organization of specialized intercellular junctions. Alternatively spliced transcript variants have been described, but their biological validity has not been determined. [provided by RefSeq, Jul 2008],



Western blot analysis of lysates from Jarkat cells, primary antibody was diluted at 1:1000, 4° over night

