

# Flotillin-1 rabbit pAb

Cat No.:ES16367

For research use only

## Overview

Product Name	Flotillin-1 rabbit pAb
Host species	Rabbit
Applications	WB; ELISA
Species Cross-Reactivity	Human; Mouse; Rat
Recommended dilutions	WB 1:500-2000, ELISA(peptide)1:5000-20000
Immunogen	Synthesized peptide derived from human Flotillin-1
Specificity	This antibody detects endogenous levels of human Flotillin-1
Formulation	Liquid in PBS containing 50% glycerol, 0.5% BSA and 0.02% sodium azide.
Storage	Store at -20°C. Avoid repeated freeze-thaw cycles.
Protein Name	Flotillin-1
Gene Name	FLOT1
Cellular localization	Cell membrane; Peripheral membrane protein . Endosome . Membrane, caveola ; Peripheral membrane protein . Melanosome . Membrane raft . Identified by mass spectrometry in melanosome fractions from stage I to stage IV (PubMed:17081065). Membrane-associated
Purification	The antibody was affinity-purified from rabbit antiserum by affinity-chromatography using epitope-specific immunogen.
Clonality	Polyclonal
Concentration	1 mg/ml
Observed band	48kD
Human Gene ID	10211
Human Swiss-Prot Number	O75955
Alternative Names	Flotillin-1
Background	This gene encodes an protein that localizes to the caveolae, which are small domains on the inner cell membranes. This protein plays a role in vesicle trafficking and cell morphology. Alternative splicing results in multiple transcript variants. [provided by

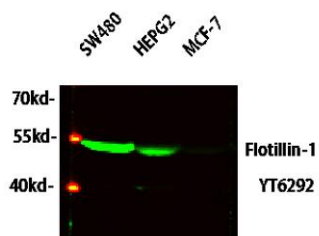




**ELK Biotechnology**

RefSeq, Jan 2016],

Western blot analysis of various lysates, primary antibody was diluted at 1:1000, 4° over night, secondary antibody(cat: RS23920)was diluted at 1:10000, 37° 1hour.



+86-27-59760950

ELKbio@ELKbiotech.com

[www.elkbiotech.com](http://www.elkbiotech.com)

23-2, No.388 Gaoxin 2nd Road,Wuhan East Lake Hi-tech Development Zone, Hubei , P.R.C