

# HEM1 rabbit pAb

Cat No.:ES15793

For research use only

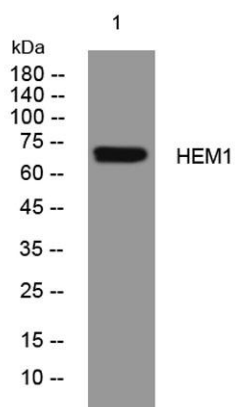
## Overview

Product Name	HEM1 rabbit pAb
Host species	Rabbit
Applications	WB
Species Cross-Reactivity	Human; Mouse;Rat
Recommended dilutions	WB 1: 500-2000
Immunogen	Synthesized peptide derived from human HEM1 AA range: 87-137
Specificity	This antibody detects endogenous levels of HEM1 at Human/Mouse/Rat
Formulation	Liquid in PBS containing 50% glycerol, 0.5% BSA and 0.02% sodium azide.
Storage	Store at -20°C. Avoid repeated freeze-thaw cycles.
Protein Name	HEM1
Gene Name	ALAS1 ALAS3 ALASH OK/SW-cl.121
Cellular localization	Mitochondrion inner membrane ; Peripheral membrane protein . Localizes to the matrix side of the mitochondrion inner membrane. .
Purification	The antibody was affinity-purified from rabbit antiserum by affinity-chromatography using epitope-specific immunogen.
Clonality	Polyclonal
Concentration	1 mg/ml
Observed band	
Human Gene ID	211
Human Swiss-Prot Number	P13196
Alternative Names	
Background	This gene encodes the mitochondrial enzyme which is catalyzes the rate-limiting step in heme (iron-protoporphyrin) biosynthesis. The enzyme encoded by this gene is the housekeeping enzyme; a separate gene encodes a form of the enzyme that is specific for erythroid tissue. The level of the mature encoded protein is regulated by heme: high levels of





heme down-regulate the mature enzyme in mitochondria while low heme levels up-regulate. A pseudogene of this gene is located on chromosome 12. Alternative splicing results in multiple transcript variants encoding different isoforms. [provided by RefSeq, Jan 2015],



Western blot analysis of lysates from U2OS cells, primary antibody was diluted at 1:1000, 4° over night

