

TIM50 rabbit pAb

Cat No.:ES12695

For research use only

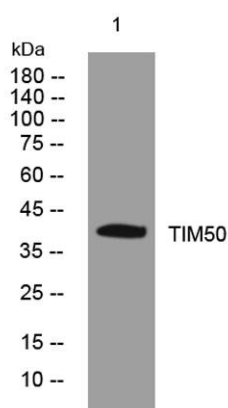
Overview

Product Name	TIM50 rabbit pAb
Host species	Rabbit
Applications	WB
Species Cross-Reactivity	Human; Mouse
Recommended dilutions	WB 1:500-2000
Immunogen	Synthesized peptide derived from human TIM50 AA range: 109-159
Specificity	This antibody detects endogenous levels of TIM50 at Human/Mouse
Formulation	Liquid in PBS containing 50% glycerol, 0.5% BSA and 0.02% sodium azide.
Storage	Store at -20°C. Avoid repeated freeze-thaw cycles.
Protein Name	TIM50
Gene Name	TIMM50 TIM50 PRO1512
Cellular localization	Mitochondrion inner membrane ; Single-pass membrane protein . ; [Isoform 2]: Nucleus speckle . Nuclear and enriched in speckles with snRNPs .
Purification	The antibody was affinity-purified from rabbit antiserum by affinity-chromatography using epitope-specific immunogen.
Clonality	Polyclonal
Concentration	1 mg/ml
Observed band	38kD
Human Gene ID	92609
Human Swiss-Prot Number	Q3ZCQ8
Alternative Names	Mitochondrial import inner membrane translocase subunit TIM50
Background	This gene encodes a subunit of the TIM23 inner mitochondrial membrane translocase complex. The encoded protein functions as the receptor subunit that recognizes the mitochondrial targeting signal, or presequence, on protein cargo that is destined for the mitochondrial inner membrane and matrix.





This protein may also play a role in maintaining the membrane permeability barrier, and knockdown of this gene in human cells results in the release of cytochrome c and apoptosis. [provided by RefSeq, Jul 2016],



Western blot analysis of lysates from KB cells, primary antibody was diluted at 1:1000, 4°over night

