

# GM130 rabbit pAb

Cat No.:ES16150

For research use only

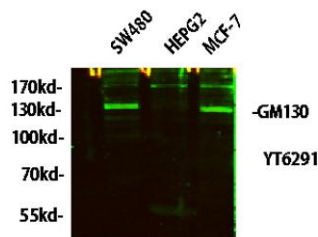
## Overview

Product Name	GM130 rabbit pAb
Host species	Rabbit
Applications	WB;IHC;IF;ELISA
Species Cross-Reactivity	Human; Mouse; Rat
Recommended dilutions	Western Blot: 1/500 - 1/2000. ELISA: 1/10000. Not yet tested in other applications.
Immunogen	Synthesized peptide derived from human GM130
Specificity	This antibody detects endogenous levels of human GM130
Formulation	Liquid in PBS containing 50% glycerol, 0.5% BSA and 0.02% sodium azide.
Storage	Store at -20°C. Avoid repeated freeze-thaw cycles.
Protein Name	GM130
Gene Name	GOLGA2
Cellular localization	Golgi apparatus, cis-Golgi network membrane ; Peripheral membrane protein ; Cytoplasmic side . Endoplasmic reticulum-Golgi intermediate compartment membrane ; Peripheral membrane protein ; Cytoplasmic side . Cytoplasm, cytoskeleton, spindle pole . Associa
Purification	The antibody was affinity-purified from rabbit antiserum by affinity-chromatography using epitope-specific immunogen.
Clonality	Polyclonal
Concentration	1 mg/ml
Observed band	112-130kD
Human Gene ID	2801
Human Swiss-Prot Number	Q08379
Alternative Names	Golgin subfamily A member 2 (130 kDa cis-Golgi matrix protein;GM130;GM130 autoantigen;Golgin-95)
Background	The Golgi apparatus, which participates in glycosylation and transport of proteins and lipids in



the secretory pathway, consists of a series of stacked cisternae (flattened membrane sacs). Interactions between the Golgi and microtubules are thought to be important for the reorganization of the Golgi after it fragments during mitosis. This gene encodes one of the golgins, a family of proteins localized to the Golgi. This encoded protein has been postulated to play roles in the stacking of Golgi cisternae and in vesicular transport. Several alternatively spliced transcript variants of this gene have been described, but the full-length nature of these variants has not been determined. [provided by RefSeq, Feb 2010],

Western blot analysis of lysates from HT-29, NIH/3T3, and HepG2 cells, primary antibody was diluted at 1:1000, 4° over night, secondary antibody(cat: RS23920)was diluted at 1:10000, 37° 1hour.



Immunohistochemical analysis of paraffin-embedded human lung cancer. 1, Antibody was diluted at 1:200(4° overnight). 2, Tris-EDTA,pH9.0 was used for antigen retrieval. 3,Secondary antibody was diluted at 1:200(room temperature, 45min).

