

RD3 rabbit pAb

Cat No.:ES13432

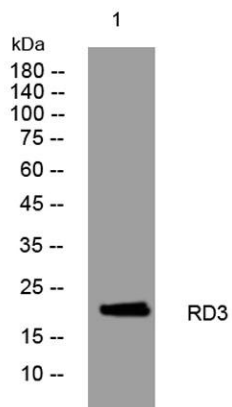
For research use only

Overview

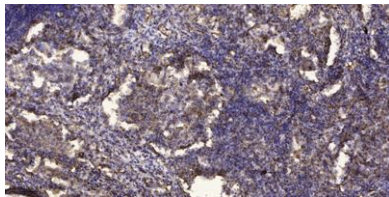
| | |
|--------------------------|---|
| Product Name | RD3 rabbit pAb |
| Host species | Rabbit |
| Applications | WB;ELISA;IHC |
| Species Cross-Reactivity | Human; Mouse |
| Recommended dilutions | WB 1:500-2000;IHC-p 1:50-300; ELISA 2000-20000 |
| Immunogen | Synthesized peptide derived from human RD3 AA range: 126-176 |
| Specificity | This antibody detects endogenous levels of RD3 at Human/Mouse |
| Formulation | Liquid in PBS containing 50% glycerol, 0.5% BSA and 0.02% sodium azide. |
| Storage | Store at -20°C. Avoid repeated freeze-thaw cycles. |
| Protein Name | RD3 |
| Gene Name | RD3 C1orf36 |
| Cellular localization | Cell projection, cilium, photoreceptor outer segment . Photoreceptor inner segment . Endosome . Nucleus . Cytoplasm . Cytoplasm, perinuclear region . Colocalizes with GUCY2E and GUCY2F in rods and cones photoreceptors. Colocalizes with GUK1 in photorecept |
| Purification | The antibody was affinity-purified from rabbit antiserum by affinity-chromatography using epitope-specific immunogen. |
| Clonality | Polyclonal |
| Concentration | 1 mg/ml |
| Observed band | |
| Human Gene ID | 343035 |
| Human Swiss-Prot Number | Q7Z3Z2 |
| Alternative Names | |
| Background | This gene encodes a retinal protein that is associated with promyelocytic leukemia-gene product (PML) bodies in the nucleus. Mutations in this gene cause Leber congenital amaurosis type 12, |



a disease that results in retinal degeneration. Alternative splicing results in multiple transcript variants. [provided by RefSeq, Sep 2009],



Western blot analysis of lysates from AD293 cells, primary antibody was diluted at 1:1000, 4° over night



Immunohistochemical analysis of paraffin-embedded human Squamous cell carcinoma of lung. 1, Antibody was diluted at 1:200(4° overnight). 2, Tris-EDTA,pH9.0 was used for antigen retrieval. 3,Secondary antibody was diluted at 1:200(room temperature, 45min).

