

MMP20 (Cleaved-Tyr108) rabbit pAb

Cat No.:ES20025

For research use only

Overview

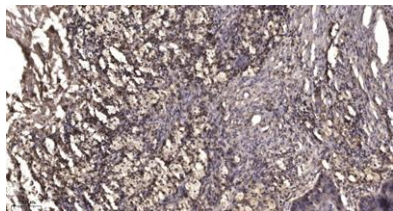
Product Name	MMP20 (Cleaved-Tyr108) rabbit pAb
Host species	Rabbit
Applications	WB;IHC
Species Cross-Reactivity	Human;Mouse;Rat
Recommended dilutions	WB 1:500-2000;IHC-p 1:50-300
Immunogen	Synthesized peptide derived from human MMP20 (Cleaved-Tyr108)
Specificity	This antibody detects endogenous levels of Human,Mouse,Rat MMP20 (Cleaved-Tyr108, protein was cleaved amino acid sequence between 107-108)
Formulation	Liquid in PBS containing 50% glycerol, 0.5% BSA and 0.02% sodium azide.
Storage	Store at -20°C. Avoid repeated freeze-thaw cycles.
Protein Name	MMP20 (Cleaved-Tyr108)
Gene Name	MMP20
Cellular localization	Secreted, extracellular space, extracellular matrix .
Purification	The antibody was affinity-purified from rabbit antiserum by affinity-chromatography using epitope-specific immunogen.
Clonality	Polyclonal
Concentration	1 mg/ml
Observed band	42 53kD
Human Gene ID	9313
Human Swiss-Prot Number	O60882
Alternative Names	Matrix metalloproteinase-20 (MMP-20;EC 3.4.24.-;Enamel metalloproteinase;Enamelysin)

Background





ELK Biotechnology



Immunohistochemical analysis of paraffin-embedded human Squamous cell carcinoma of lung. 1, Antibody was diluted at 1:200(4° overnight). 2, Tris-EDTA,pH9.0 was used for antigen retrieval. 3,Secondary antibody was diluted at 1:200(room temperature, 45min).



+86-27-59760950

ELKbio@ELKbiotech.com

www.elkbiotech.com

23-2, No.388 Gaoxin 2nd Road,Wuhan East Lake Hi-tech Development Zone, Hubei , P.R.C