

EXOC6 rabbit pAb

Cat No.:ES16654

For research use only

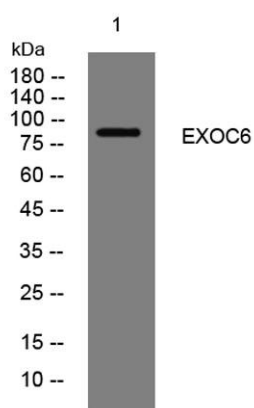
Overview

Product Name	EXOC6 rabbit pAb
Host species	Rabbit
Applications	WB
Species Cross-Reactivity	Human; Mouse;Rat
Recommended dilutions	WB 1: 500-2000
Immunogen	Synthesized peptide derived from human EXOC6 AA range: 610-660
Specificity	This antibody detects endogenous levels of EXOC6 at Human/Mouse/Rat
Formulation	Liquid in PBS containing 50% glycerol, 0.5% BSA and 0.02% sodium azide.
Storage	Store at -20°C. Avoid repeated freeze-thaw cycles.
Protein Name	EXOC6
Gene Name	EXOC6 SEC15A SEC15L SEC15L1
Cellular localization	Cytoplasm . Cytoplasm, perinuclear region . Cell projection, growth cone . Midbody, Midbody ring . Perinuclear in undifferentiated cells. Redistributes to growing neurites and growth cones during neuronal differentiation. Colocalizes with CNTRL/centriolin
Purification	The antibody was affinity-purified from rabbit antiserum by affinity-chromatography using epitope-specific immunogen.
Clonality	Polyclonal
Concentration	1 mg/ml
Observed band	
Human Gene ID	54536
Human Swiss-Prot Number	Q8TAG9
Alternative Names	
Background	The protein encoded by this gene is highly similar to the Saccharomyces cerevisiae SEC15 gene product, which is essential for vesicular traffic from the Golgi apparatus to the cell surface in yeast. It is one of the components of a multiprotein complex required for





exocytosis. The 5' portion of this gene and two neighboring cytochrome p450 genes are included in a deletion that results in an autosomal-dominant form of nonsyndromic optic nerve aplasia (ONA). Alternative splicing and the use of alternative promoters results in multiple transcript variants. A paralogous gene encoding a similar protein is present on chromosome 2. [provided by RefSeq, Jan 2016],



Western blot analysis of lysates from Jarkat cells, primary antibody was diluted at 1:1000, 4° over night

