

ATG13 Rabbit pAb

Cat No.:ES20862

For research use only

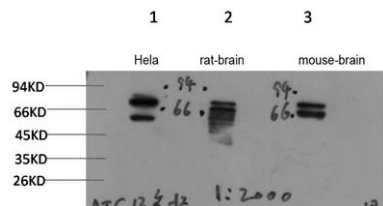
Overview

Product Name	ATG13 Rabbit pAb
Host species	Rabbit
Applications	IHC;WB
Species Cross-Reactivity	Human; Mouse;Rat
Recommended dilutions	IHC-p1:50-200 ,WB 1:1000-2000
Immunogen	Synthesized peptide derived from human ATG13 AA range: 182-232
Specificity	This antibody detects endogenous levels of ATG13 at Human, Mouse,Rat
Formulation	Liquid in PBS containing 50% glycerol, 0.5% BSA and 0.02% sodium azide.
Storage	Store at -20°C. Avoid repeated freeze-thaw cycles.
Protein Name	ATG13
Gene Name	ATG13 KIAA0652
Cellular localization	Cytoplasm, cytosol . Preautophagosomal structure . Under starvation conditions, is localized to punctate structures primarily representing the isolation membrane; the isolation membrane sequesters a portion of the cytoplasm resulting in autophagosome forma
Purification	The antibody was affinity-purified from rabbit antiserum by affinity-chromatography using epitope-specific immunogen.
Clonality	Polyclonal
Concentration	1 mg/ml
Observed band	72kD
Human Gene ID	9776
Human Swiss-Prot Number	O75143
Alternative Names	Autophagy-related protein 13
Background	Atg13 was identified as a constitutively expressed protein that was genetically linked to Atg1/Apg1, a protein kinase required for autophagy. Overexpression of Atg1 suppresses the defects in



autophagy observed in Atg13 mutants. Autophagy requires a direct association between Atg1 and Atg13, and is inhibited by TOR-dependent phosphorylation of Atg13 under high-nutrient conditions.

Western blot analysis of 1)Hela Cell, 2) Rat Brain Tissue, 3) Mouse Brain Tissue Lysate using Rabbit pAb diluted at 1:2,000.



Immunohistochemical analysis of paraffin-embedded human liver cancer. 1, Antibody was diluted at 1:200(4° overnight). 2, Tris-EDTA,pH9.0 was used for antigen retrieval. 3,Secondary antibody was diluted at 1:200(room temperature, 45min).

