

SMPX rabbit pAb

Cat No.:ES13046

For research use only

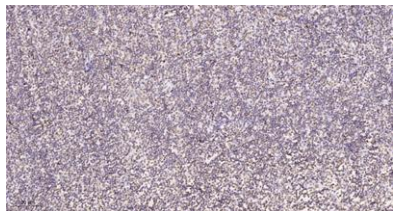
Overview

Product Name	SMPX rabbit pAb
Host species	Rabbit
Applications	IHC;IF
Species Cross-Reactivity	Human; Mouse;Rat
Recommended dilutions	IHC-p 1: 50-200
Immunogen	Synthesized peptide derived from human SMPX AA range: 21-71
Specificity	This antibody detects endogenous levels of SMPX at Human/Mouse/Rat
Formulation	Liquid in PBS containing 50% glycerol, 0.5% BSA and 0.02% sodium azide.
Storage	Store at -20°C. Avoid repeated freeze-thaw cycles.
Protein Name	SMPX
Gene Name	SMPX SRMX
Cellular localization	nucleus,muscle tendon junction,integral component of membrane,M band,costamere,
Purification	The antibody was affinity-purified from rabbit antiserum by affinity-chromatography using epitope-specific immunogen.
Clonality	Polyclonal
Concentration	1 mg/ml
Observed band	
Human Gene ID	23676
Human Swiss-Prot Number	Q9UHP9
Alternative Names	
Background	<p>This gene encodes a small protein that has no known functional domains. Mutations in this gene are a cause of X-linked deafness-4, and the encoded protein may play a role in the maintenance of inner ear cells subjected to mechanical stress.</p> <p>Alternatively spliced transcript variants have been observed for this gene. [provided by RefSeq, Dec 2011],</p>





ELK Biotechnology



Immunohistochemical analysis of paraffin-embedded human tonsil. 1, Tris-EDTA, pH 9.0 was used for antigen retrieval. 2 Antibody was diluted at 1:200 (4°C overnight). 3, Secondary antibody was diluted at 1:200 (room temperature, 45 min).



+86-27-59760950

ELKbio@ELKbiotech.com

www.elkbiotech.com

23-2, No.388 Gaoxin 2nd Road, Wuhan East Lake Hi-tech Development Zone, Hubei, P.R.C.