

# TBL3 rabbit pAb

Cat No.:ES12788

For research use only

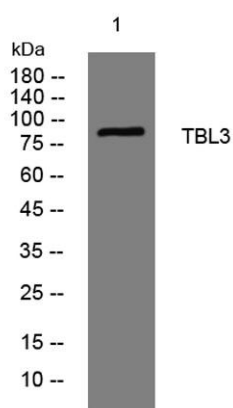
## Overview

Product Name	TBL3 rabbit pAb
Host species	Rabbit
Applications	WB
Species Cross-Reactivity	Human; Mouse;Rat
Recommended dilutions	WB 1: 500-2000
Immunogen	Synthesized peptide derived from human TBL3 AA range: 486-536
Specificity	This antibody detects endogenous levels of TBL3 at Human/Mouse/Rat
Formulation	Liquid in PBS containing 50% glycerol, 0.5% BSA and 0.02% sodium azide.
Storage	Store at -20°C. Avoid repeated freeze-thaw cycles.
Protein Name	TBL3
Gene Name	TBL3 SAZD
Cellular localization	Nucleus, nucleolus .
Purification	The antibody was affinity-purified from rabbit antiserum by affinity-chromatography using epitope-specific immunogen.
Clonality	Polyclonal
Concentration	1 mg/ml
Observed band	
Human Gene ID	10607
Human Swiss-Prot Number	Q12788
Alternative Names	
Background	The protein encoded by this gene has sequence similarity with members of the WD40 repeat-containing protein family. The WD40 group is a large family of proteins, which appear to have a regulatory function. It is believed that the WD40 repeats mediate protein-protein interactions and members of the family are involved in signal transduction, RNA processing, gene regulation, vesicular trafficking, cytoskeletal assembly and may





play a role in the control of cytotypic differentiation. This gene has multiple polyadenylation sites. It might have multiple alternatively spliced transcript variants but the variants have not been fully described yet. [provided by RefSeq, Jul 2008],



Western blot analysis of lysates from HeLa cells, primary antibody was diluted at 1:1000, 4°over night

