

# DMRT2 rabbit pAb

Cat No.:ES16928

For research use only

## Overview

Product Name	DMRT2 rabbit pAb
Host species	Rabbit
Applications	WB
Species Cross-Reactivity	Human;Rat;Mouse;
Recommended dilutions	WB 1:500-2000
Immunogen	Synthesized peptide derived from human DMRT2 AA range: 315-365
Specificity	This antibody detects endogenous levels of DMRT2 at Human
Formulation	Liquid in PBS containing 50% glycerol, 0.5% BSA and 0.02% sodium azide.
Storage	Store at -20°C. Avoid repeated freeze-thaw cycles.
Protein Name	DMRT2
Gene Name	DMRT2 DSXL2
Cellular localization	Nucleus .
Purification	The antibody was affinity-purified from rabbit antiserum by affinity-chromatography using epitope-specific immunogen.
Clonality	Polyclonal
Concentration	1 mg/ml
Observed band	60kD
Human Gene ID	10655
Human Swiss-Prot Number	Q9Y5R5
Alternative Names	Doublesex- and mab-3-related transcription factor 2 (Doublesex-like 2 protein) (DSXL-2)
Background	The protein encoded by this gene belongs to the DMRT gene family, sharing a DM DNA-binding domain with Drosophila 'doublesex' (dsx) and C. elegans mab3, genes involved in sex determination in these organisms. Also, this gene is located in a region of the human genome (chromosome 9p24.3) associated with gonadal dysgenesis and XY sex reversal. Hence this gene is one of the candidates

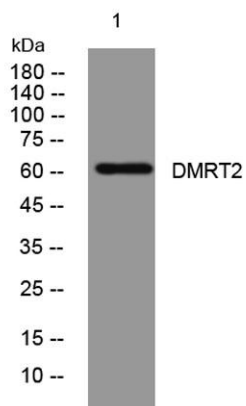




**ELK Biotechnology**

for sex-determining gene(s) on chr 9. [provided by  
RefSeq, Apr 2010],

Western blot analysis of lysates from A431 cells, primary  
antibody was diluted at 1:1000, 4° over night



+86-27-59760950

ELKbio@ELKbiotech.com

[www.elkbiotech.com](http://www.elkbiotech.com)

23-2, No.388 Gaoxin 2nd Road, Wuhan East Lake Hi-tech Development Zone, Hubei, P.R.C.