

PRPC rabbit pAb

Cat No.:ES13909

For research use only

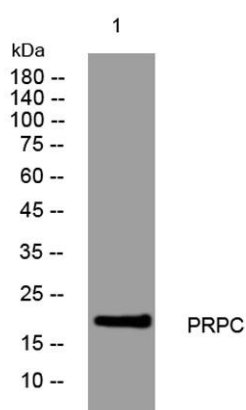
Overview

| | |
|--------------------------|--|
| Product Name | PRPC rabbit pAb |
| Host species | Rabbit |
| Applications | WB |
| Species Cross-Reactivity | Human;Rat;Mouse; |
| Recommended dilutions | WB 1: 500-2000 |
| Immunogen | Synthesized peptide derived from human PRPC AA range: 81-131 |
| Specificity | This antibody detects endogenous levels of PRPC at Human |
| Formulation | Liquid in PBS containing 50% glycerol, 0.5% BSA and 0.02% sodium azide. |
| Storage | Store at -20°C. Avoid repeated freeze-thaw cycles. |
| Protein Name | PRPC |
| Gene Name | PRH1; PRH2 |
| Cellular localization | Secreted. |
| Purification | The antibody was affinity-purified from rabbit antiserum by affinity-chromatography using epitope-specific immunogen. |
| Clonality | Polyclonal |
| Concentration | 1 mg/ml |
| Observed band | |
| Human Gene ID | 5554 |
| Human Swiss-Prot Number | P02810 |
| Alternative Names | |
| Background | This gene encodes a member of the heterogeneous family of proline-rich salivary glycoproteins. The encoded preproprotein undergoes proteolytic processing to generate one or more mature isoforms before secretion from the parotid and submandibular/sublingual glands. Multiple distinct alleles of this locus including the parotid isoelectric-focusing variant slow (PIF-s), the parotid acidic protein (Pa), and the double band slow (Db-s) |





isoforms have been characterized. The reference genome encodes the Db-s allele. Certain alleles of this gene are associated with susceptibility to dental caries. This gene is located in a cluster of closely related salivary proline-rich proteins on chromosome 12. Co-transcription of this gene with adjacent genes has been observed. Alternate splicing of this gene results in multiple transcript variants encoding different isoforms. [provided by RefSeq, Oct 2015],



Western blot analysis of lysates from 293T cells, primary antibody was diluted at 1:1000, 4°over night

